

TECHNICAL DATA

DESCRIPTION:

FLUSH GLAZED THERMALLY BROKEN SYSTEM.
PROFILE DIM. 2" x 4-1/2" (50.8 x 114.3mm).

COMPATIBILITY:

DESIGNED TO SUIT ALL STANDARD DOORS AND DOOR HARDWARE.

FINISH:

MOST PROFILES ARE STOCKED IN #17 CLEAR AND #40 BRONZE ANODIZED. OTHER ANODIZED AND PAINT FINISHES ARE AVAILABLE UPON REQUEST.

STOCK LENGTH:

24'-2" (7.37 METERS).

ASSEMBLY:

DESIGNED FOR SCREW PORT AND/OR BRACKET ASSEMBLY.

STRENGTH:

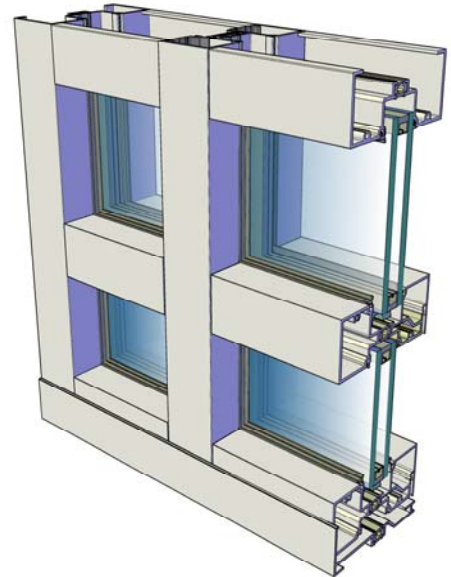
REFER TO WIND LOAD CHARTS FOR MAXIMUM ALLOWABLE SPANS.

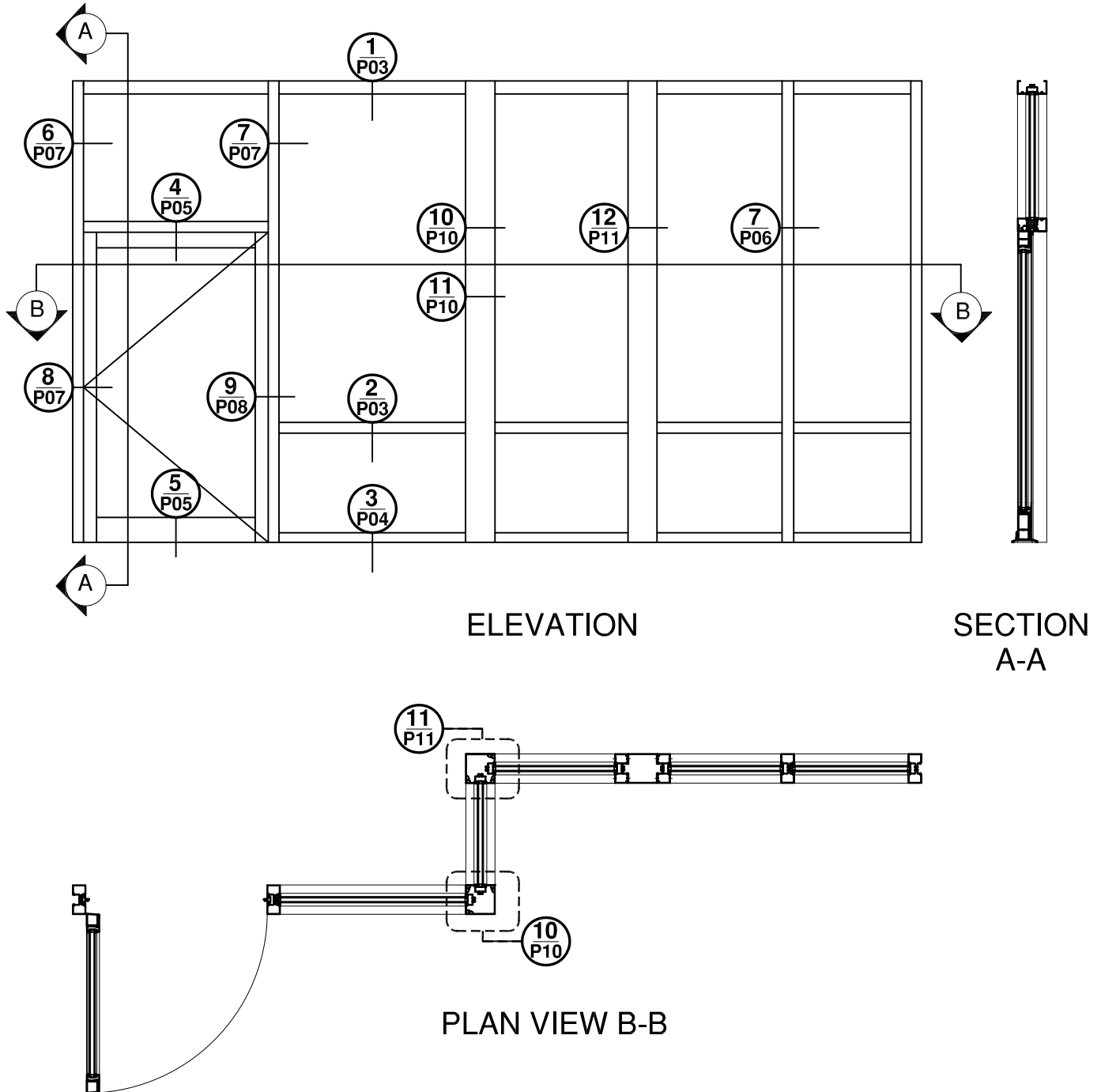
ANCHORING:

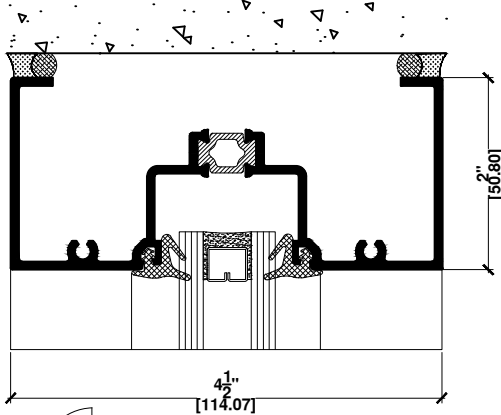
REFER TO FABRICATION AND INSTALLATION MANUAL.

GLAZING:

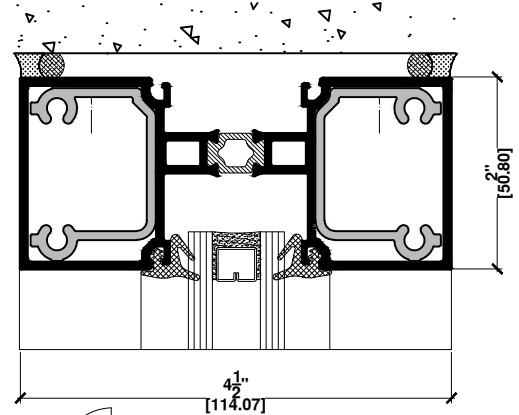
2500 SERIES IS DESIGNED TO BE GLAZED FROM EXTERIOR AND WILL ACCEPT 1" (25.4mm) SEALED UNIT GLASS, REFER TO APPLICABLE DETAILS. IF GLAZING FROM INTERIOR IS REQUIRED, CONTACT COMMDOOR ALUMINUM FOR DETAILS.



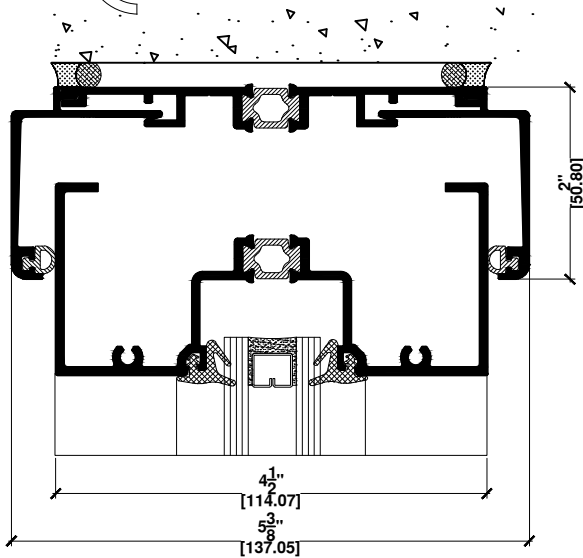




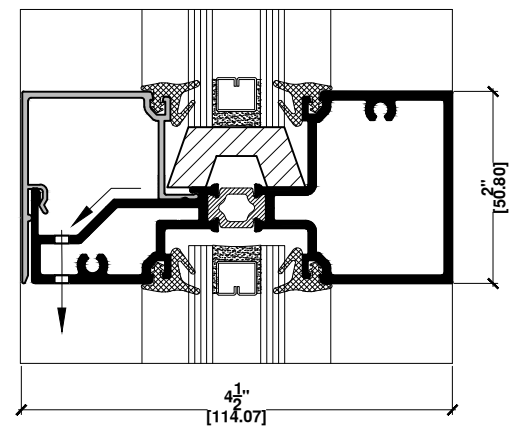
1 HEAD
FIXED GLASS
FRAME HEADER



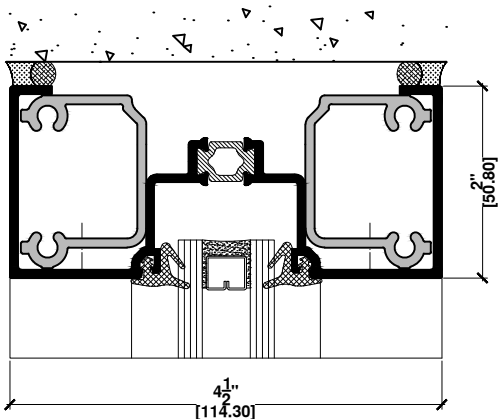
1c HEAD
FIXED GLASS - MULLION
2 POCKET W/ BRACKET



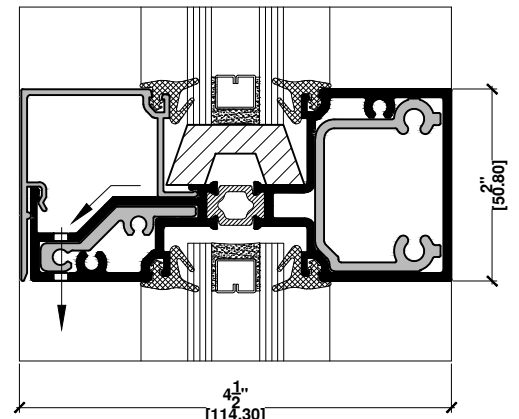
1a HEAD
FIXED GLASS - HEAD
DEFLECTOR/FRAME HEADER



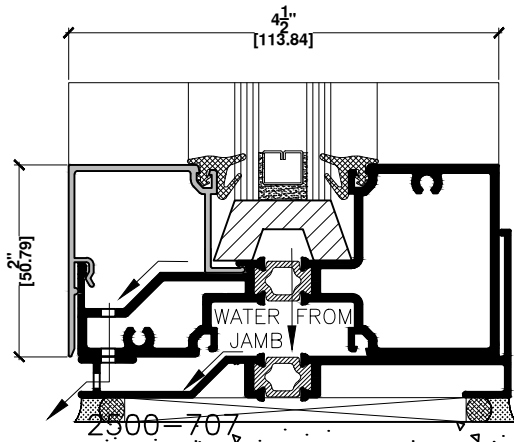
2 HOR. MULLION
FIXED GLASS - FIXED GLASS



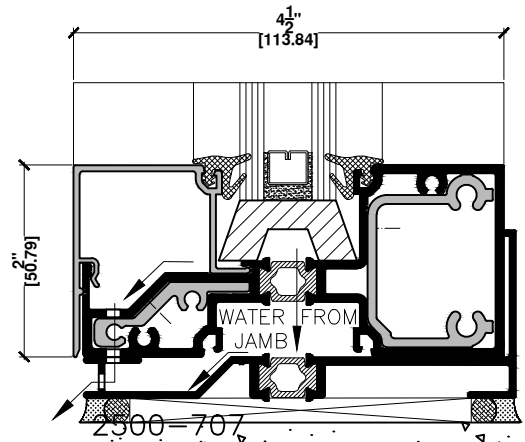
1b HEAD
FIXED GLASS - FRAME
HEADER W/ BRACKET



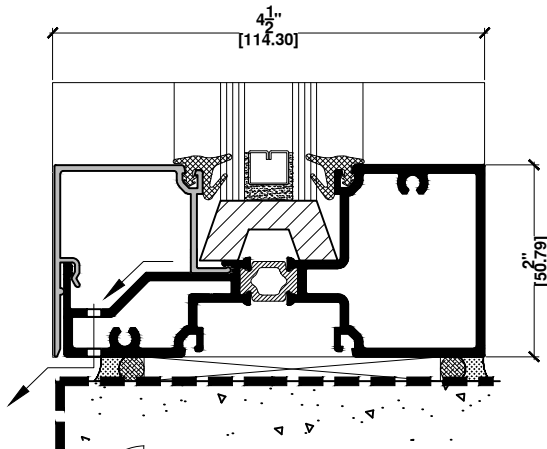
2a HOR. MULLION
W/ BRACKET
FIXED GLASS-FIXED GLASS



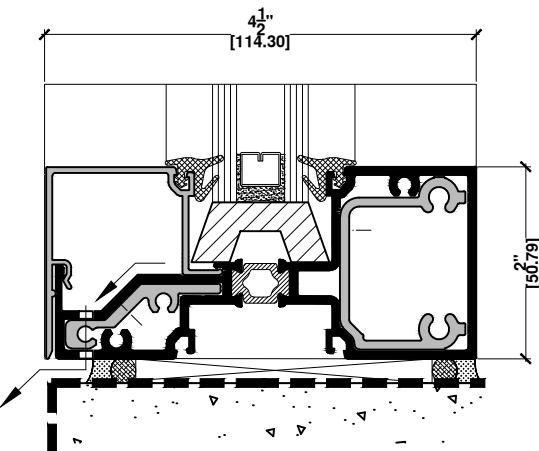
3 SILL
FIXED GLASS - HOR. MULL.
SILL BASE



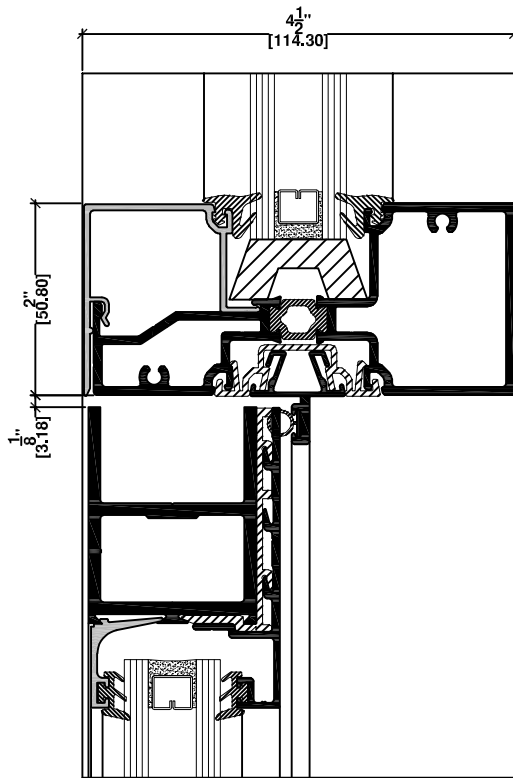
3c SILL
FIXED GLASS - HOR. MULL.
W/ BRACKET - SILL BASE



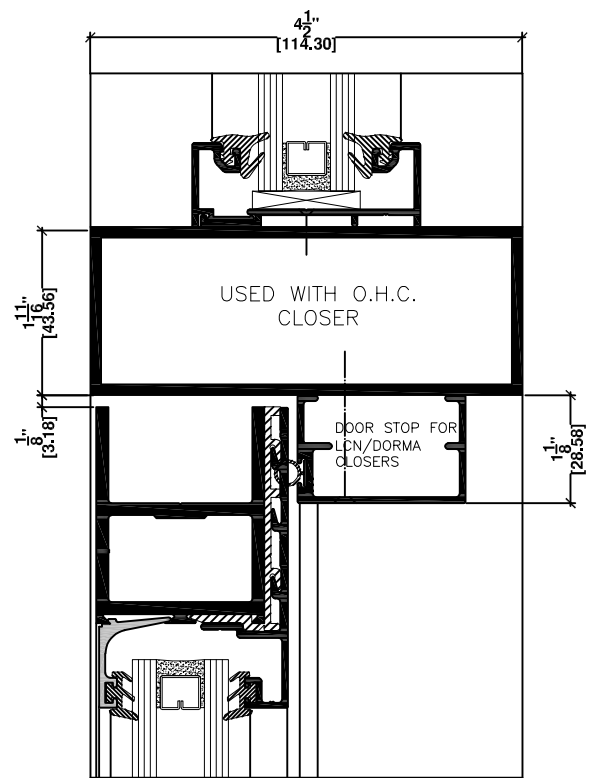
3a SILL
FIXED GLASS
HOR. MULLION



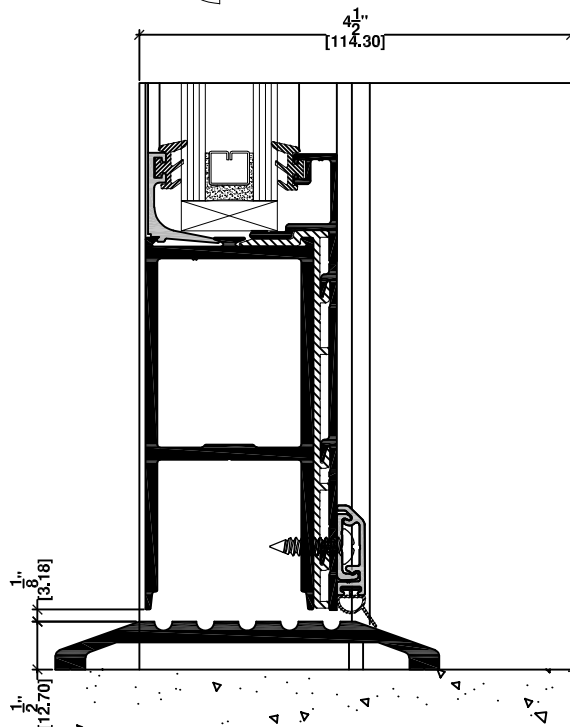
3b SILL
FIXED GLASS
HOR. MULL. W/ BRACKET



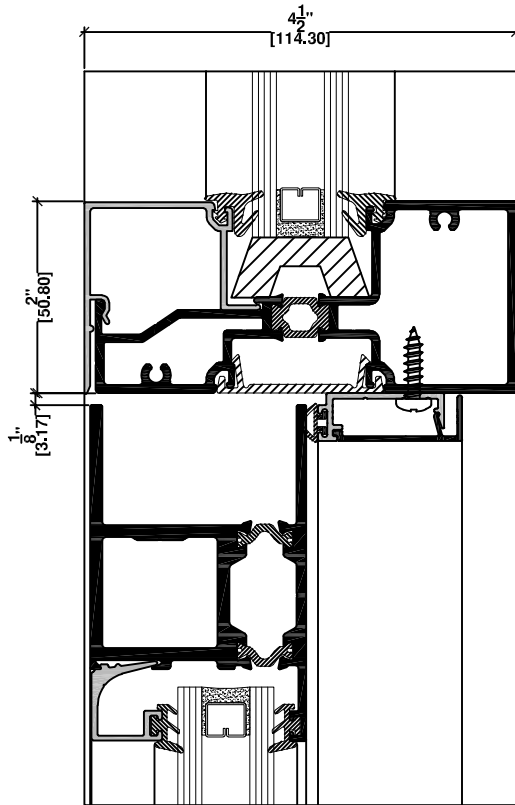
4 HOR. MULLION
FIXED GLASS/
SERIES 260 DOOR



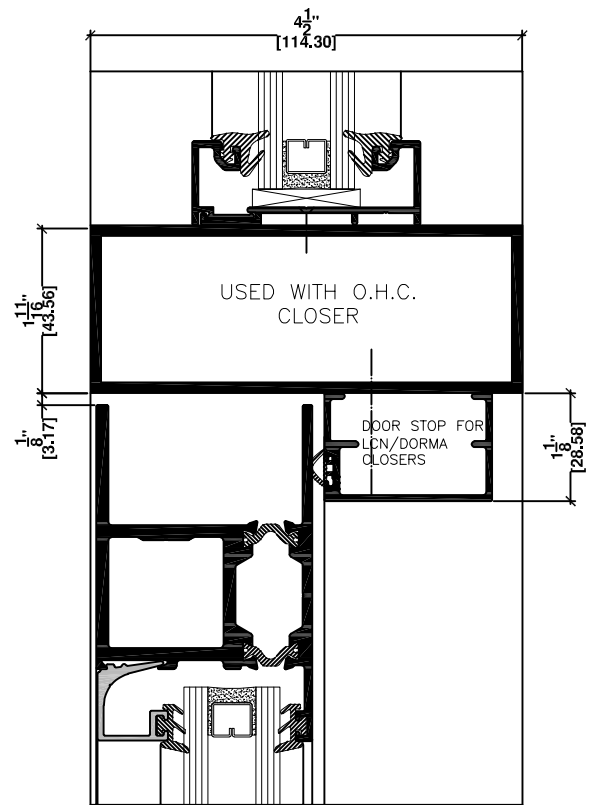
4a HOR. TUBE
FIXED GLASS/
SERIES 260 DOOR



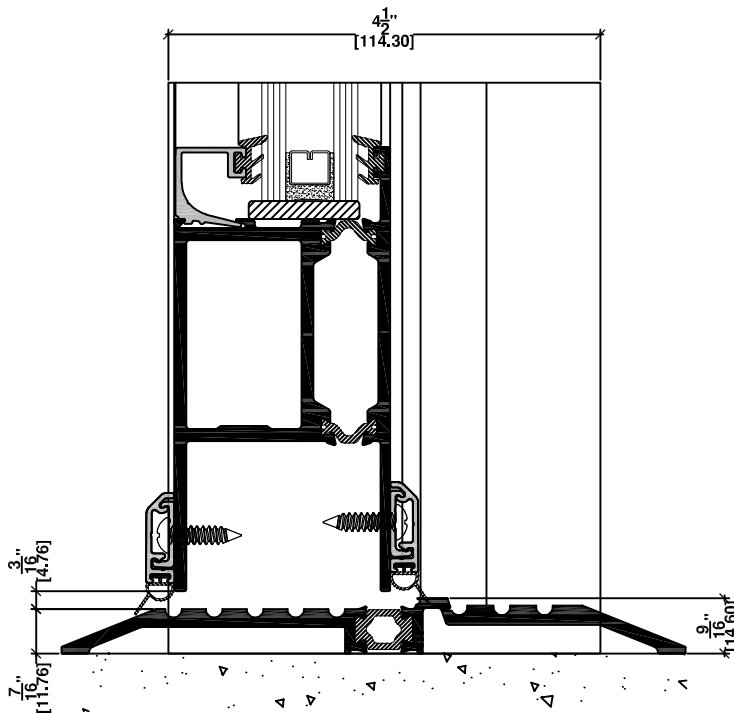
5 SERIES 260 DOOR
W/ THRESHOLD



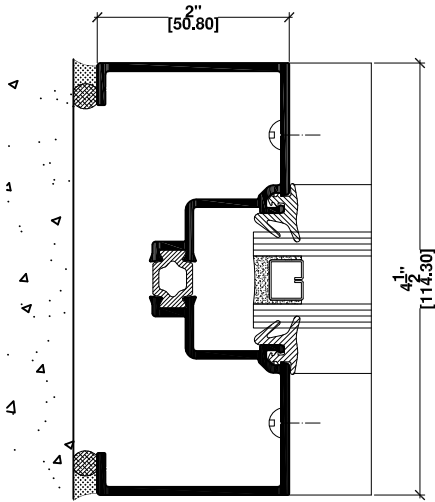
4b HOR. MULLION
FIXED GLASS/
SERIES 4000 DOOR



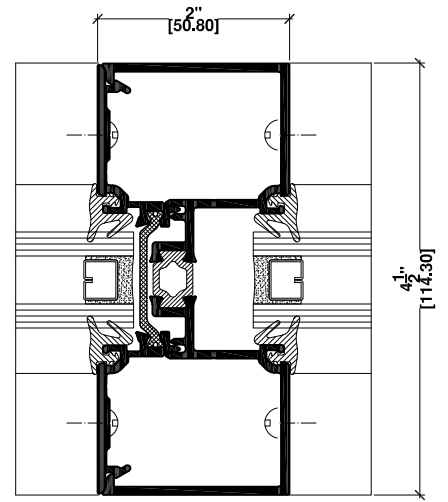
4c HOR. TUBE
FIXED GLASS/
SERIES 4000 DOOR



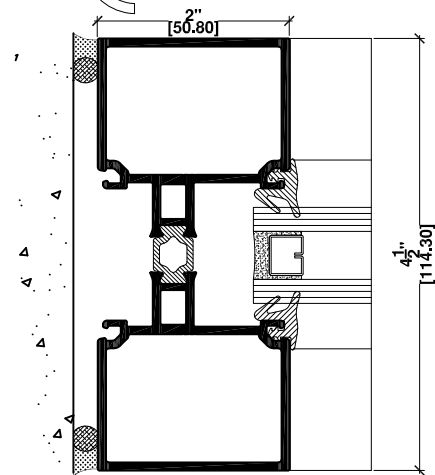
5b SERIES 4000 DOOR
W/ THRESHOLD



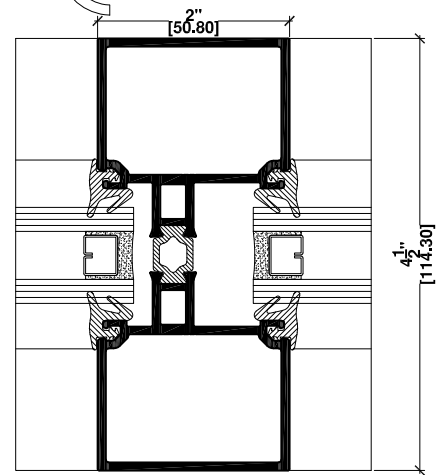
6 JAMB
FIXED GLASS
FRAME JAMB



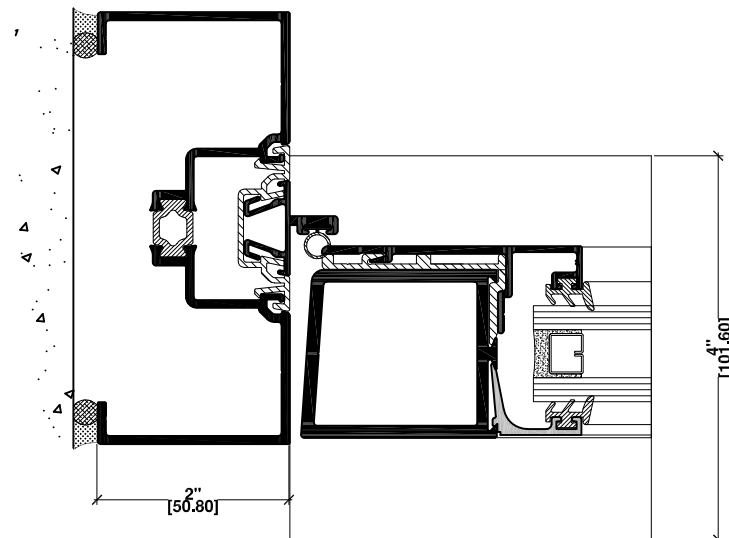
7 VERT. MULLION
FIXED GLASS - FIXED GLASS
O/B MULL. W/ ADAPTOR



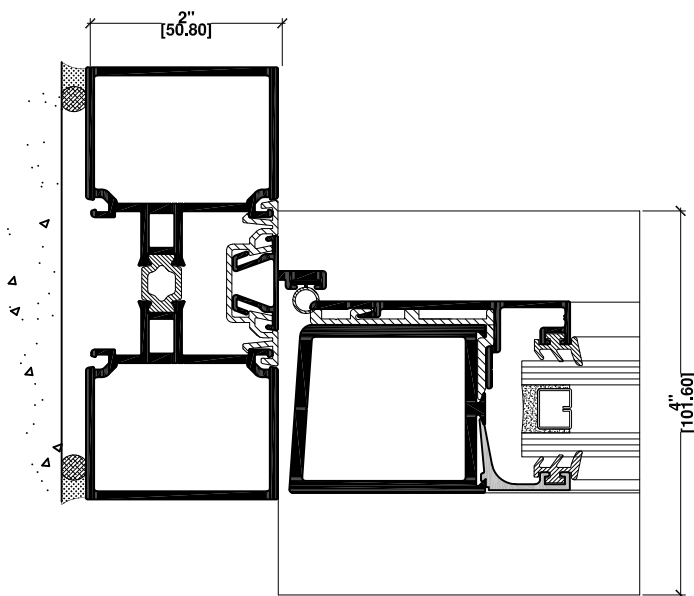
6a JAMB
FIXED GLASS
2 POCKET MULLION



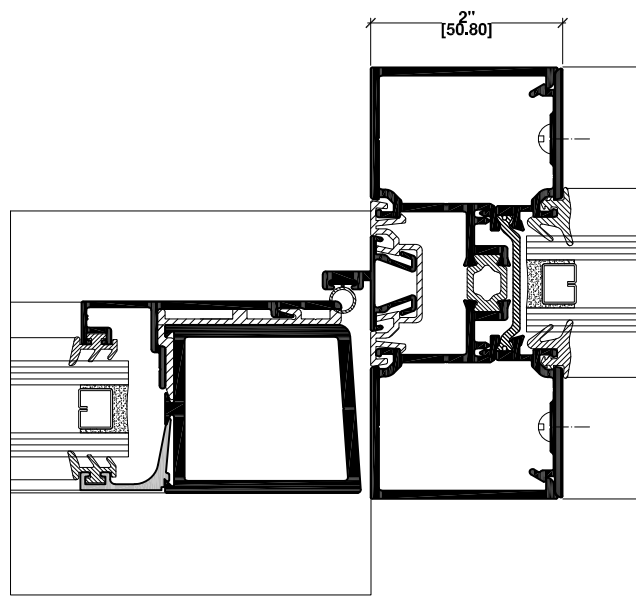
7a VERT. MULLION
FIXED GLASS
2 POCKET MULLION



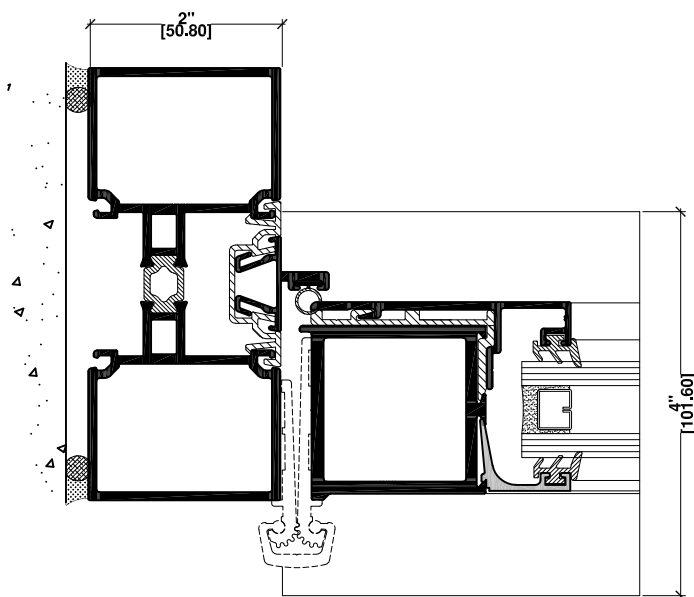
8 JAMB
FRAME JAMB
SERIES 260 DOOR



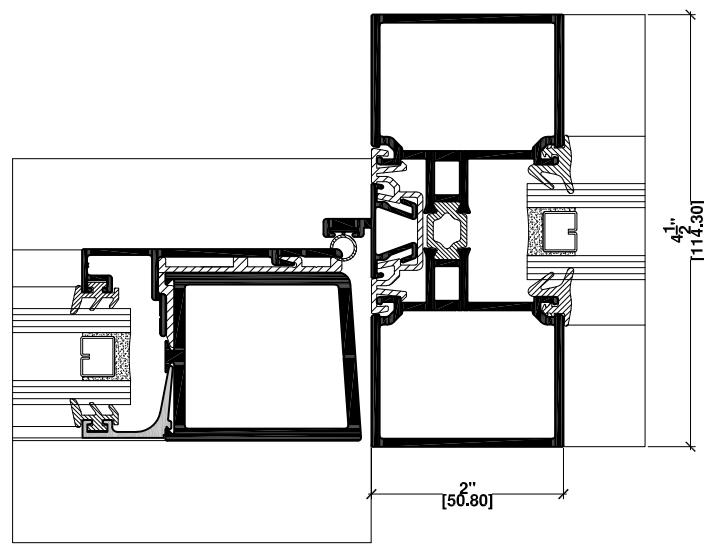
8a JAMB
2 POCKET MULLION
SERIES 260 DOOR



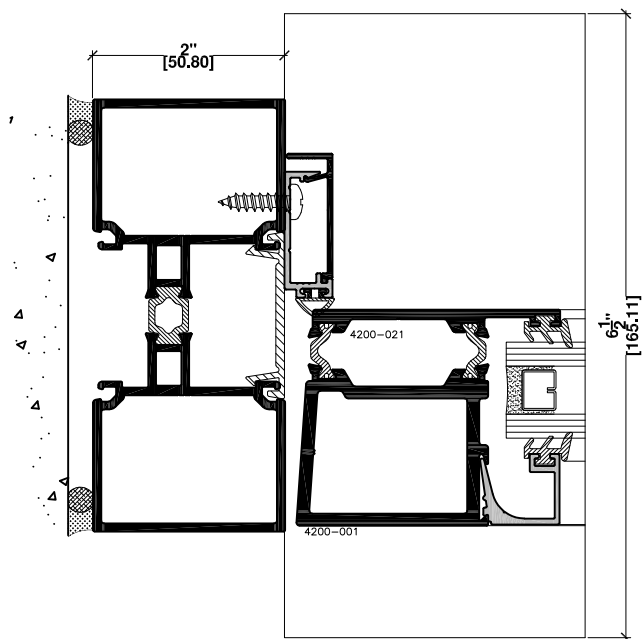
9 VERT. MULLION
2 POCKET MULLION
SERIES 260 DOOR



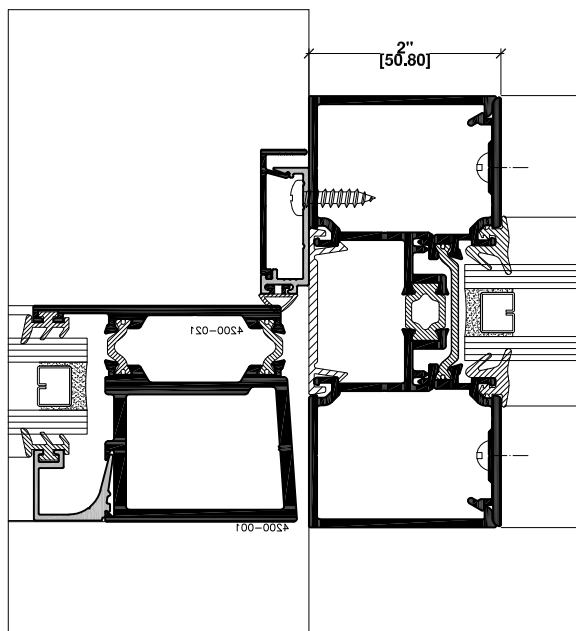
8b JAMB
2 POCKET MULLION
SERIES 260 DOOR



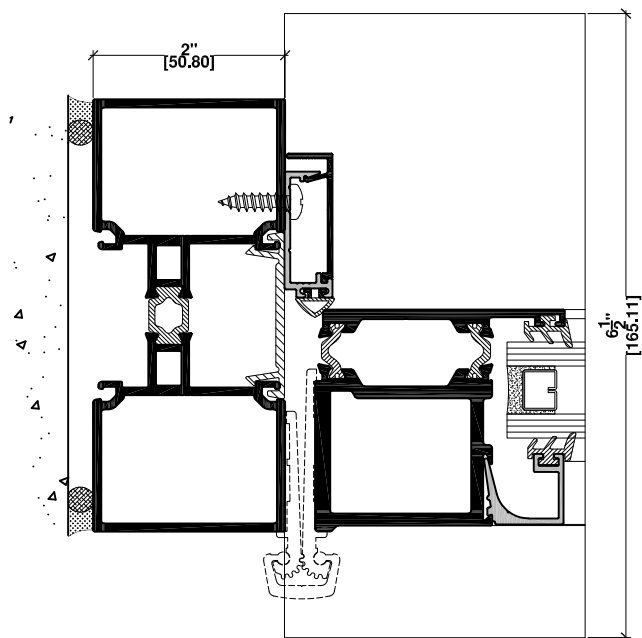
9a VERT. MULLION
2 POCKET MULLION
SERIES 260 DOOR - FIXED GLASS



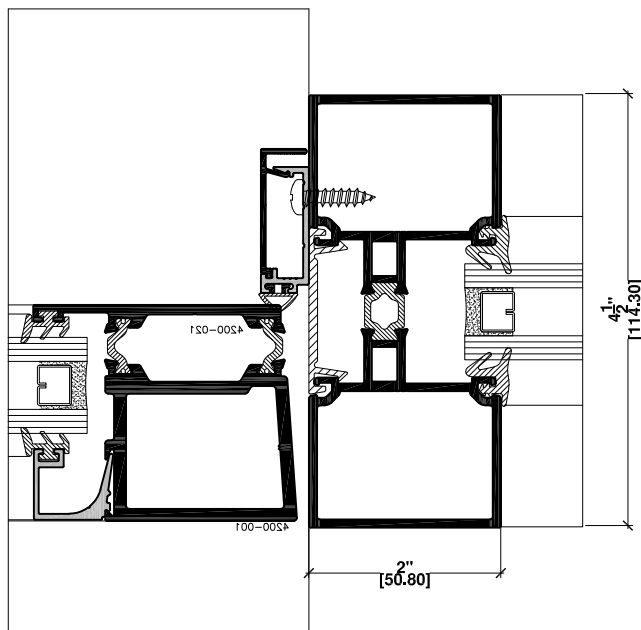
8c JAMB
FRAME JAMB
SERIES 4000 DOOR



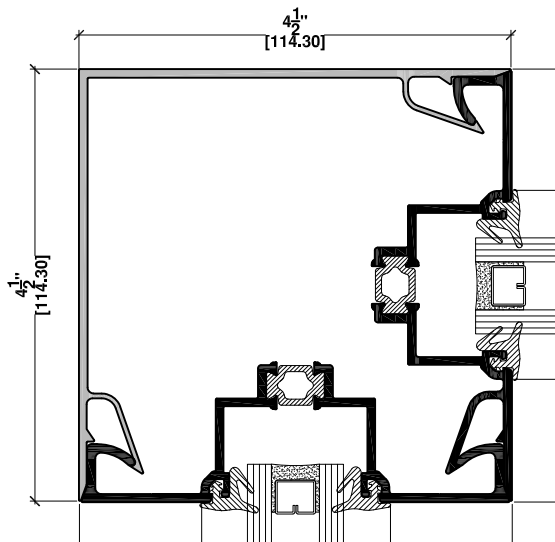
9b VERT. MULLION
2 POCKET MULLION
SERIES 4000 DOOR



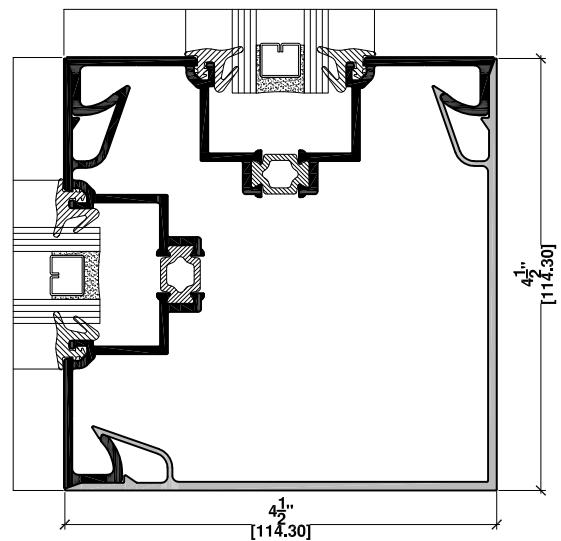
8d JAMB
2 POCKET MULLION
SERIES 4000 DOOR



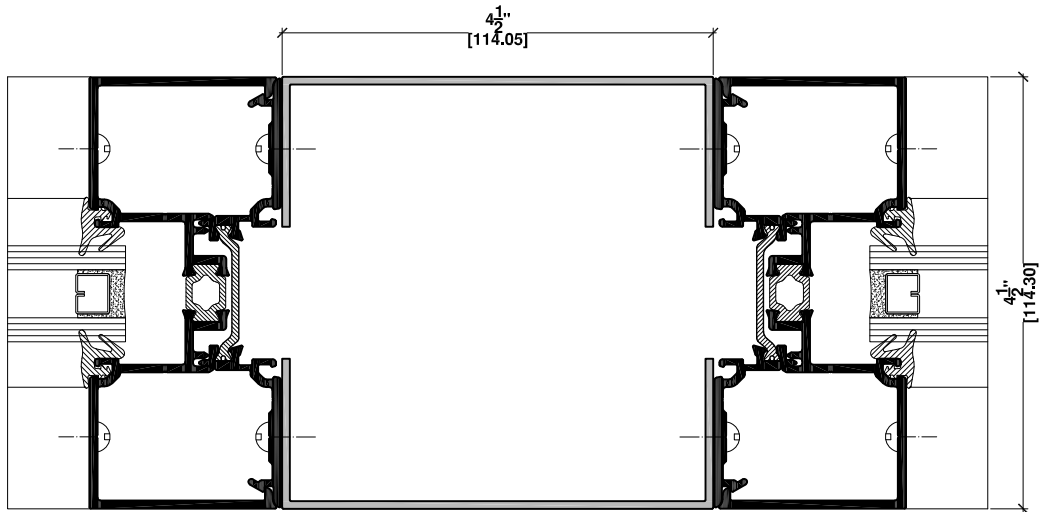
9c VERT. MULLION
2 POCKET MULLION
SERIES 4000 DOOR - FIXED GLASS



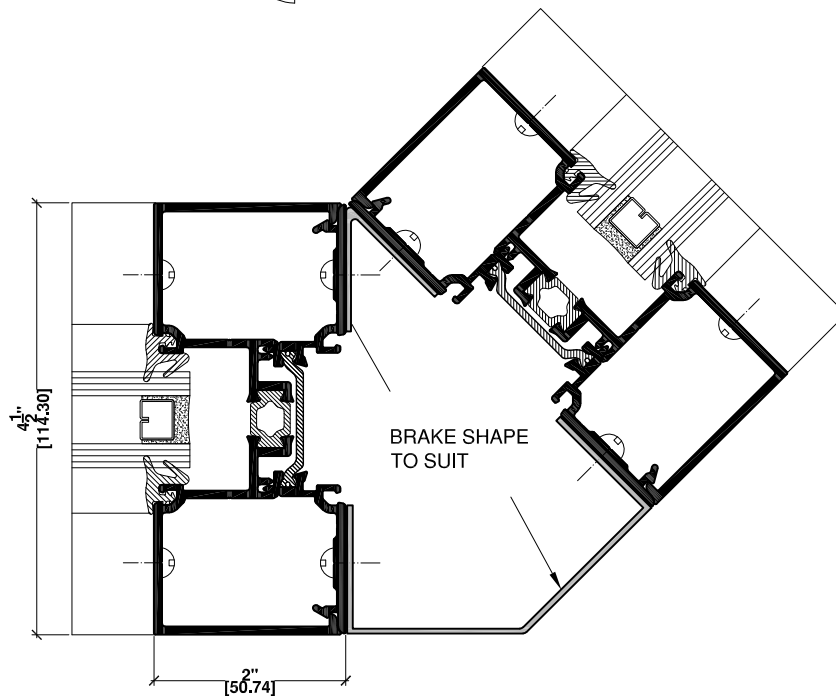
11 90° INSIDE CORNER
FIXED GLASS - FIXED GLASS



10 90° OUTSIDE CORNER
FIXED GLASS - FIXED GLASS

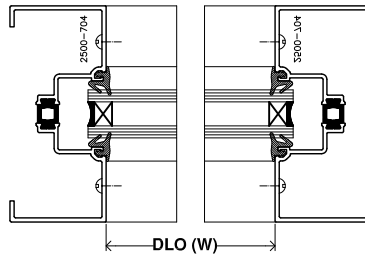
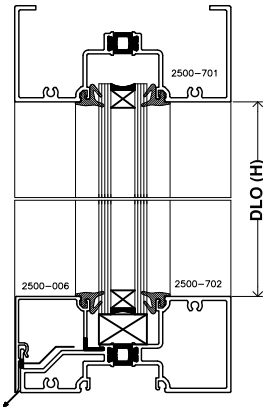


12 VERT. MULLION
FIXED GLASS - FIXED GLASS
O/B MULL. W/ ADAPTOR



12a VERT. MULLION
FIXED GLASS - FIXED GLASS
135° OUTSIDE CORNER

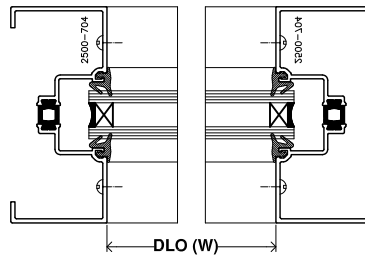
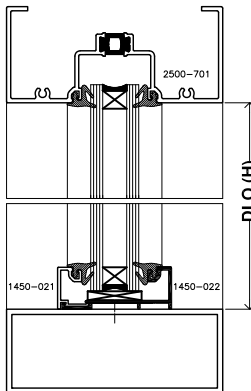
GLASS CALCULATION



15/16" (24mm)
1" (25.4mm)
1-1/16" (27mm)

Glass (W) = $DLO(W) + 3/4"(19.1mm)$
Glass (H) = $DLO(H) + 3/4"(19.1mm)$

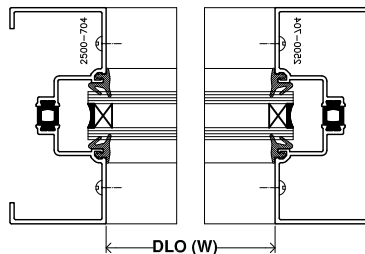
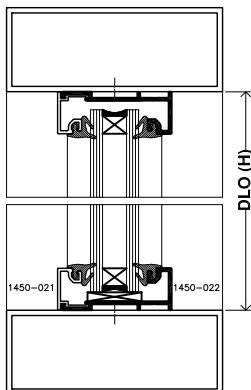
Note: use the appropriate spline



15/16" (24mm)
1" (25.4mm)
1-1/16" (27mm)

Glass (W) = $DLO(W) + 3/4"(19.1mm)$
Glass (H) = $DLO(H) - 5/16"(8.0mm)$

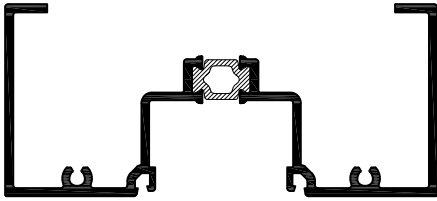
Note: use the appropriate spline



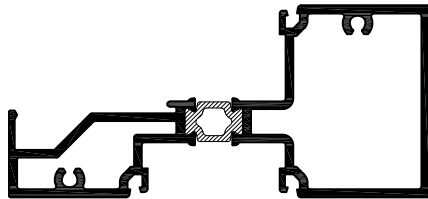
15/16" (24mm)
1" (25.4mm)
1-1/16" (27mm)

Glass (W) = $DLO(W) + 3/4"(19.1mm)$
Glass (H) = $DLO(H) - 1\frac{1}{8}"(28.6mm)$

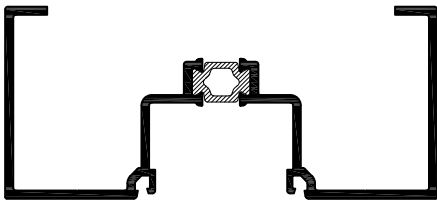
Note: use the appropriate spline



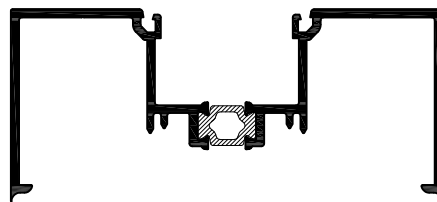
PART #:2500-701
FRAME HEADER
2" x 4-1/2"
(50.8 mm x 114.3 mm)



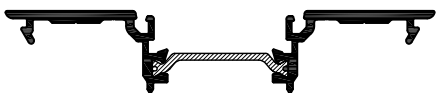
PART #:2500-702
HORIZONTAL MULLION
2" x 4-1/2"
(50.8 mm x 114.3 mm)



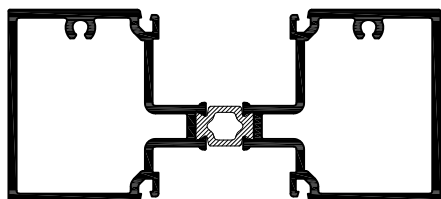
PART #:2500-704
FRAME JAMB
2" x 4-1/2"
(50.8 mm x 114.3 mm)



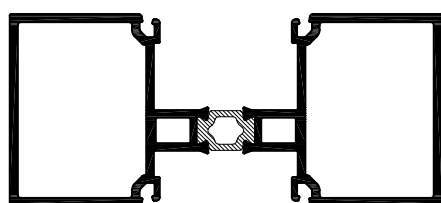
PART #:2500-705
SPLIT MULLION FEMALE
2" x 4-1/2" (50.8 mm x 114.3 mm)
USE WITH PART #:2500-703



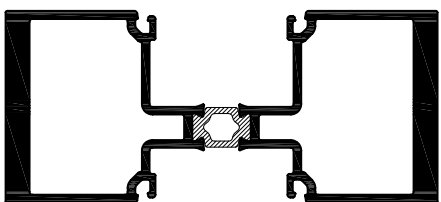
PART #:2500-703
SPLIT MULLION MALE
USE WITH PART #:2500-705



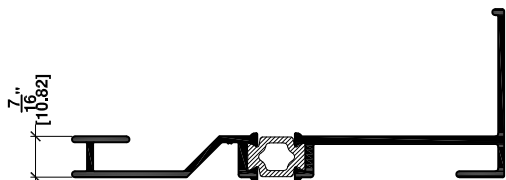
PART #:2500-706
MULLION TWO POCKET
2" x 4-1/2"
(50.8 mm x 114.3 mm)



PART #:2500-709
MULLION TWO POCKET
2" x 4-1/2"
(50.8 mm x 114.3 mm)



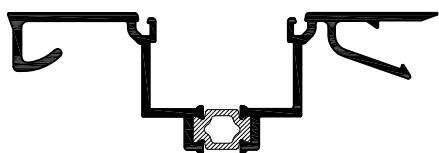
PART #:2500-712
HEAVY DUTY MULLION
2" x 4-1/2"
(50.8 mm x 114.3 mm)



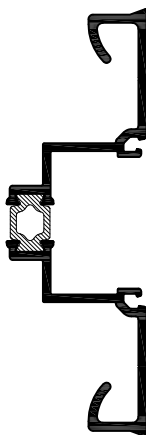
PART #:2500-707
SILL BASE
7/16" x 4-1/2"
(10.8 mm x 114.3 mm)



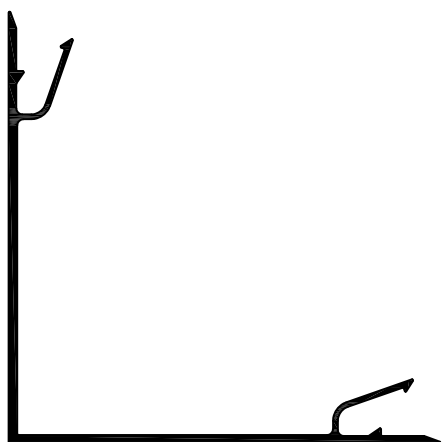
PART #:2500-708
HEAD DEFLECTOR
3/8" x 4-1/2"
(10.2 mm x 114.3 mm)



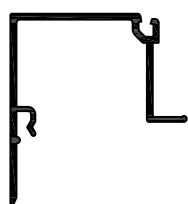
PART #:2500-711
CORNER MULLION
(FEMALE)



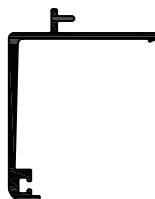
PART #:2500-710
CORNER MULLION
(MALE)



PART #:2500-023
CORNER MULLION
EXTERIOR



PART #:2500-006
GLASS STOP
USE WITH
PART #:2500-702 & 703



PART #:2500-026
HEAD DEFLECTOR
ADAPTOR
USE 2 STOCK LENGTHS
WITH PART #:2500-708



PART #: 1450-014
DOOR STOP
FOR 1-3/4" (44.5mm)
THICK DOOR



PART #: 8000-075
DOOR STOP BASE



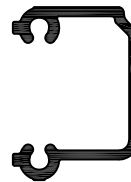
PART #: 1450-015
DOOR STOP
FOR 2" (50.8mm)
THICK DOOR



PART #: 8000-076
DOOR STOP COVER



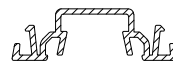
PART #: 450-233
DOOR STOP
USE FOR LCN
CLOSERS



PART #:2500-902
MULLION / SILL BRACKET



PART #:450-237
GLASS STOP
FOR LCN/DORMA




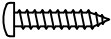
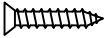
PART #:9906-150
S2500 STD DOOR STOP
ADAPTOR @14'



PART #:2500-901
SILL BRACKET

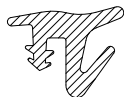


PART #:9906-151
FLAT ADAPTOR @14'

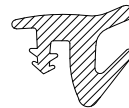
DRAWING	DESCRIPTION	APPLICATION	QTY/ JOINT
	PART #: 9902-505 # 10 X 2" QRH TAP SCREW	TO FASTEN VERTICAL TO EACH HORIZONTAL SCREW PORT	2
	PART #: 9902-503 # 10 X 1" QRH TAP SCREW	TO FASTEN TWO BRACKETS TO VERTICAL	4
	PART #: 9902-513 # 10 X 1" QFH TAP SCREW	TO FASTEN HORIZONTAL TO BRACKET	2



9903-140



9903-141



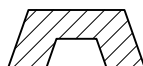
9903-142

FOR APPLICATION USE THE FOLLOWING TABLE:

GLASS THICKNESS	INTERIOR SPLINE	EXTERIOR SPLINE
15/16" (24mm)	9903-142	9903-141
1" (25mm)	9903-141	9903-141
1-1/16" (27mm)	9903-141	9903-140



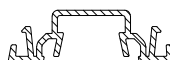
PART #:9903-138
BULB SEAL FOR
DOOR STOP



PART #:9903-200
SETTING BLOCK
(2) PER DLO



PART #:9903-001
THERMAL BREAK
FOR PART #: 2500-100



PART #:9906-150
DOOR STOP
VINYL



PART #:9903-108 HOR.
EXPANSION LOWER
AIR SEAL FOR PART #
2500-026



PART #:9906-151
FLAT ADAPTOR



PART #: 9903-143-00
BULB-SEAL FOR
DOOR STOP



PART #: 9903-145-00
BULB-SEAL FOR DOOR
STOP

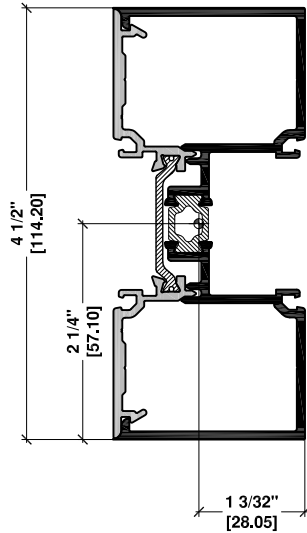
SYSTEM GLAZING SPLINE & WEATHERING

AWSF TEST RESULTS

TEST	RESULTS
Air Leakage Rate Test Pressure 75 Pa (1.57 psf)	<0.01 L/sec/m ² (<0.01 cfm/ft ²)
Water Pressure Achieved	720 Pa (15.04 psf)
Maximum Structural Pressure Achieved	Test Pressure of 2160 Pa (45.11 psf) Positive load deflection - 5.6 mm (0.22 in) Negative load deflection - 6.4 mm (0.25 in)

NFRC TEST RESULTS

ITEM	VALUE
Standardized U-Factor	0.36 Btu/hr-ft ² -F

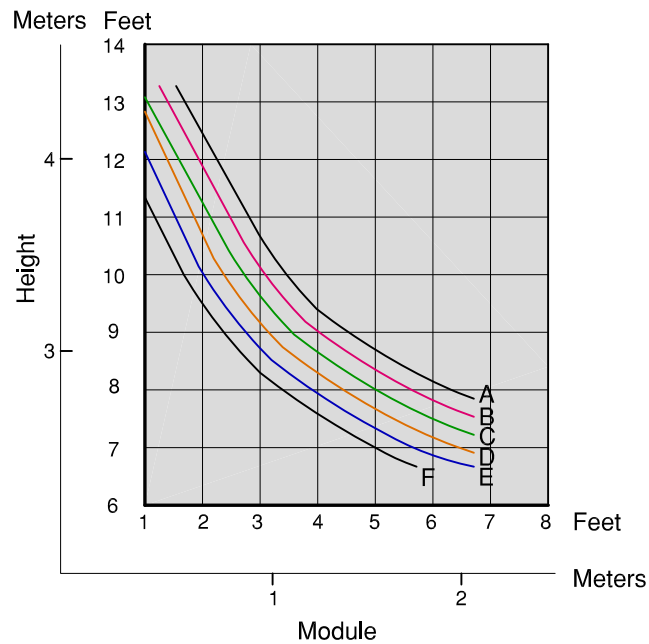


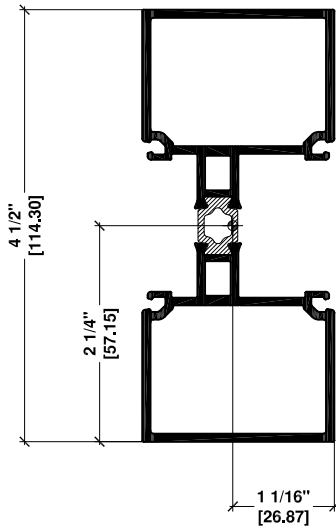
2500-705 MULLION
2\" x 4 1/2\" (50.8mm x 114.3mm)
2500-703
SPLIT MULLION MALE

A = 20 psf (0.95 KPa)
B = 25 psf (1.2 KPa)
C = 30 psf (1.4 KPa)
D = 35 psf (1.7 KPa)
E = 40 psf (1.9 KPa)
F = 45 psf (2.1 KPa)

" For information purposes only "
Not for design.

WIND LOAD

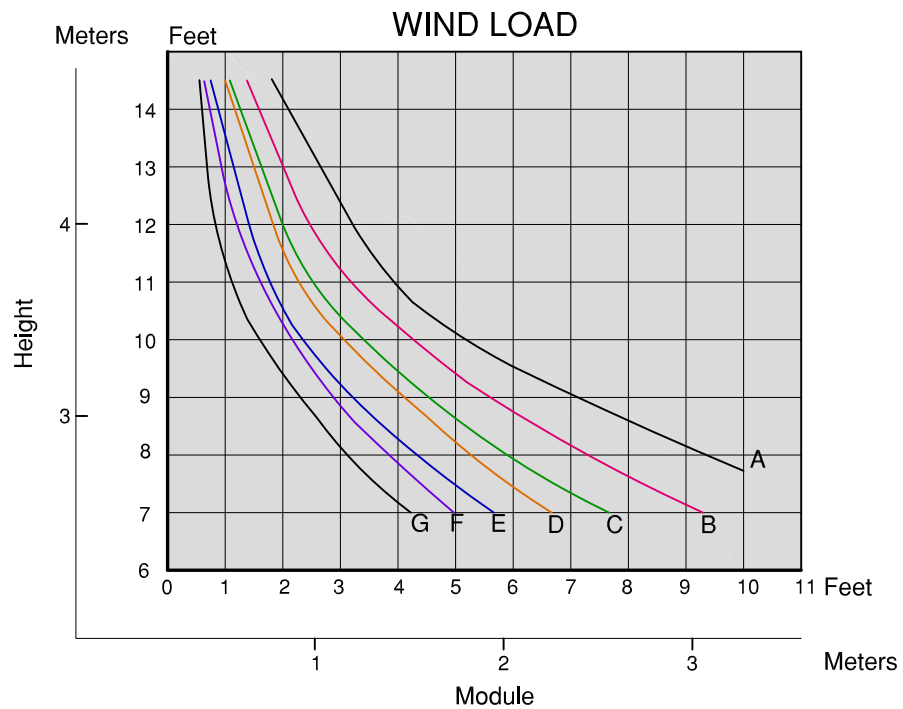


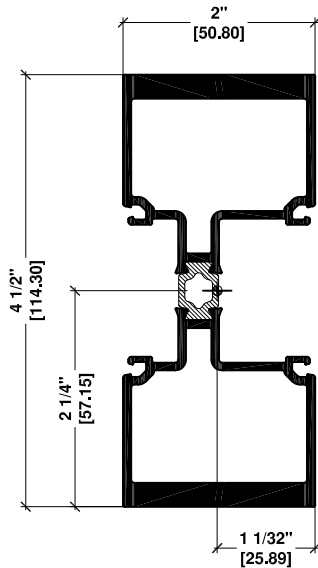


2500-709 MULLION
2" x 4 1/2" (50.8mm x 114.3mm)

A = 20 psf (0.95 KPa)
B = 25 psf (1.2 KPa)
C = 30 psf (1.4 KPa)
D = 35 psf (1.7 KPa)
E = 40 psf (1.9 KPa)
F = 45 psf (2.1 KPa)

" For information purposes only "
Not for design.





2500-712 MULLION

2" x 4 1/2" (50.8mm x 114.3mm)

$$A = 1.9502 \text{ IN}^2$$

$$I_x = 5.618 \text{ IN}^4$$

$$S_x = 2.497 \text{ IN}^3$$

A = 20 psf (0.95 KPa)

B = 25 psf (1.2 KPa)

C = 30 psf (1.4 KPa)

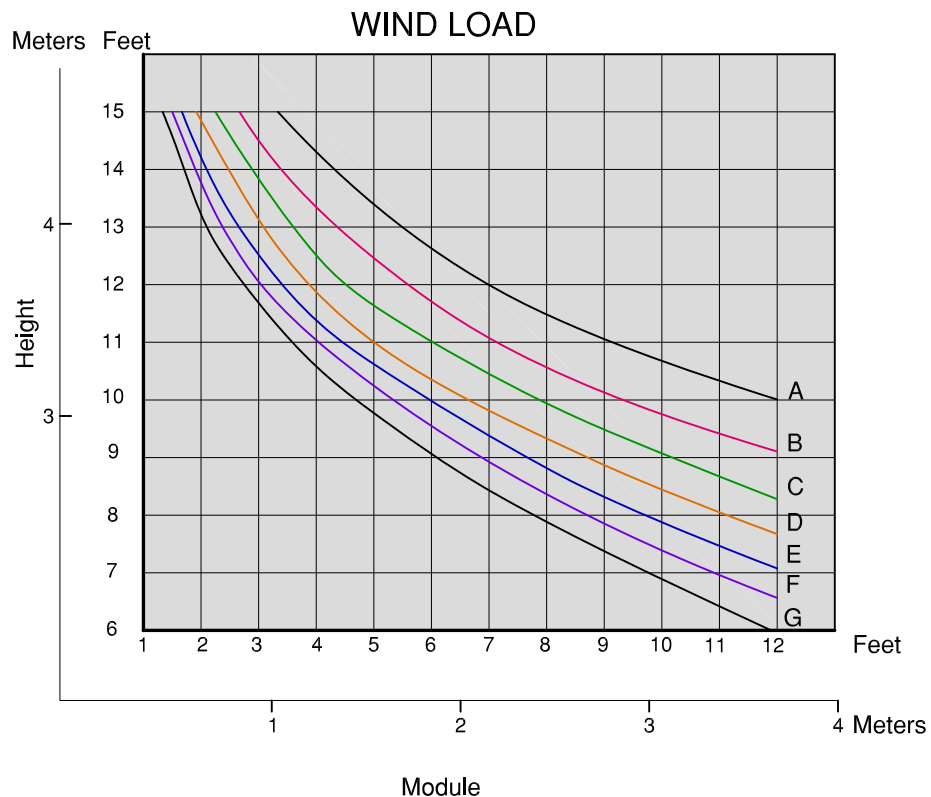
D = 35 psf (1.7 KPa)

E = 40 psf (1.9 KPa)

F = 45 psf (2.1 KPa)

G = 50 psf (2.4 KPa)

" For information purposes only "
Not for design.



2500 SERIES FRAMING SYSTEM SPECIFICATION

PART 1 - GENERAL

1.1 Work Included

Furnish labour, materials and services for the complete fabrication, assembly and installation of Series 2500 Framing system manufactured by Commdoor Aluminum. Work to include all necessary accessories, anchors and sealants as required based on the purchase agreement.

1.2 Work Excluded

Structural steel, wood blocking or framing, interior trims, concrete masonry, final cleaning, protection, related work specified elsewhere, convactor covers and trims and ceiling trims.

1.3 Quality Assurance

The framing system supplied under this specification is based upon Series 2500 manufactured by Commdoor Aluminum.

1.4 Shop Drawings

All work of this section shall be executed in strict accordance with approved shop drawings.

1.5 Warranty

The work of this section shall be guaranteed against defects of materials and workmanship for a period of one year from date of certificate of substantial completion.

PART 2 - PRODUCTS

2.1 Material

2.1.1 Aluminum Extrusion

All extruded aluminum sections to be 6063-T6 alloy or equivalent.

2.1.2 Glazing Material

All Extruded thermoplastic elastomers gasket.

2.1.3 Fasteners

Fasteners shall be zinc plated.

2.2 Fabrication

Fabrication will be carried out according to the approved shop drawings. All joints will be assembled tight and using manufactures provided assembly brackets to maintain the product design performance.

2.3 Finish

2.3.1 Anodize

Anodic Oxide Treatments are to be processed in accordance with AAMA designations.

M12C22A31 class II designation is for #17 Clear anodized finish (0.0004). M12C22A41 class I designation is for #14 Clear Anodized finish (0.0007) and colour finishes such as #26 light bronze, #40 bronze and #29 black.

2.3.2 Paint

Thermosetting Acrylic Enamel coating are to be applied in accordance with AAMA 603.8. Specify colour and type from PPG. Standard charts.

2.3.3 Fluoropolymer paint Coating

Based on Kynar 500 Resins are to be applied in accordance AAMA 605.2. Specify colour from Valspar current chart.

PART 3 - EXECUTION

3.1 Protection

Aluminum shall be isolated from concrete, mortar, plaster and dissimilar materials with a coating of Bituminous paint.

Exposed aluminum surface shall be protected from long term contamination of mortar, concrete, paint, mud, etc.

Doors and door frames shall be protected from impact damage by wood sheathing and plastic wraps.

3.2 Installation

Commdoor Aluminum products to be installed according to manufacturers instructions and in conjunction with approved shop drawings. The work shall be performed by qualified skilled personnel ensuring proper equipment provided in order to expedite the project in an efficient professional manner.

3.3 Cleaning

Interim and final cleaning shall be performed in accordance with the general conditions listing methods outlined in AAMA 609 & 610-02 (2002).