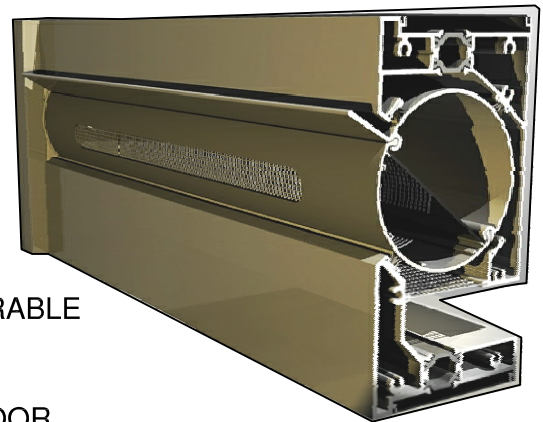
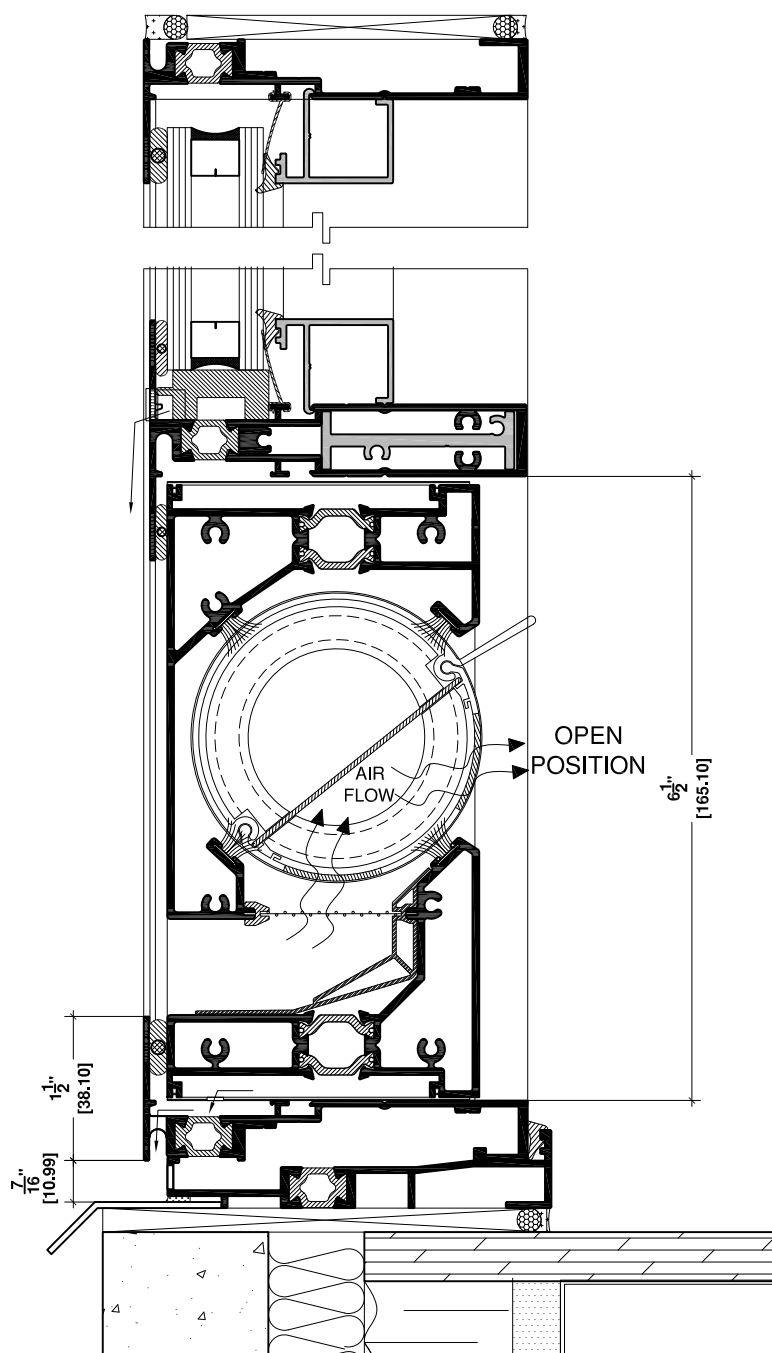
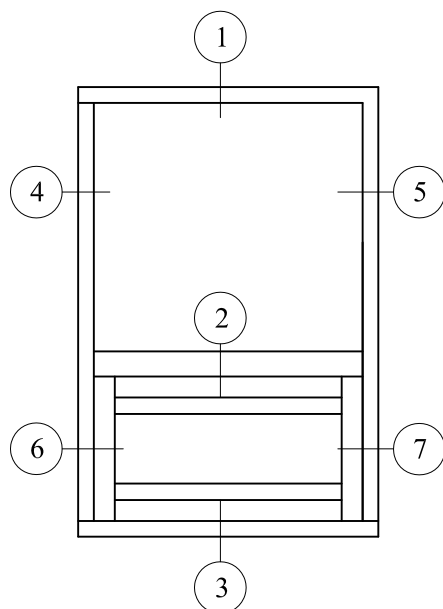


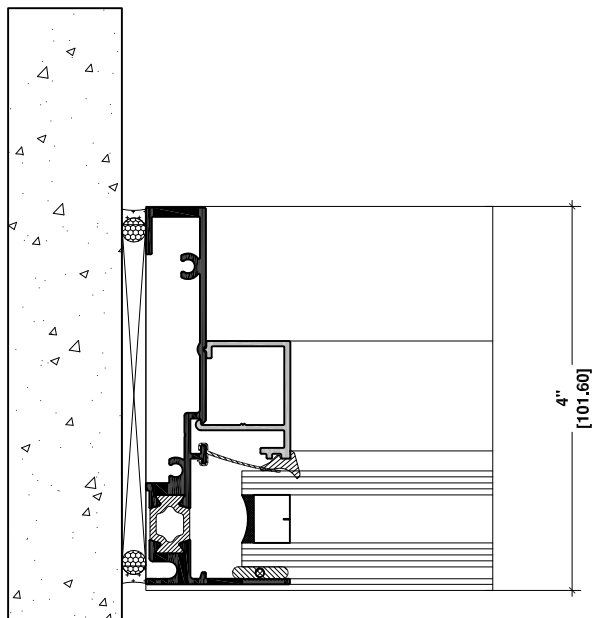
TECHNICAL DATA



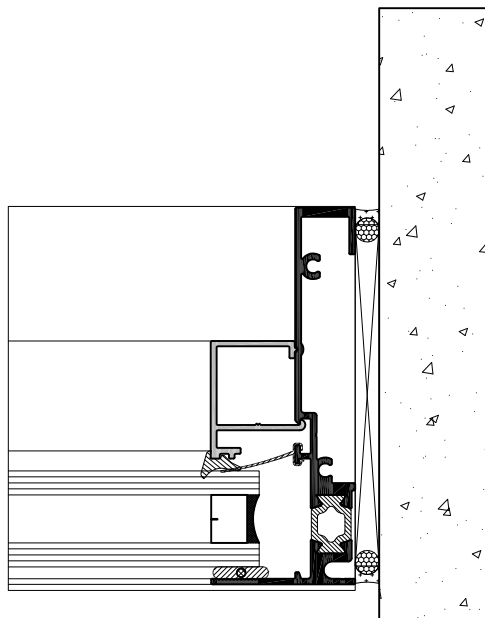
- DESCRIPTION:** THERMALLY BROKEN OPERABLE CIRCULAR VENT SYSTEM.
- COMPATIBILITY:** GLAZED INTO ALL COMMDOOR ALUMINUM'S CURTAIN WALL AND FRAMING SYSTEMS.
- FINISH:** ALL PROFILES ARE STOCKED IN #17 CLEAR AND #40 BRONZE ANODIZED. OTHER ANODIZED AND PAINT FINISHES ARE AVAILABLE UPON REQUEST. DIFFERENT FINISHES EXTERIOR AND INTERIOR ARE AVAILABLE.
- STOCK LENGTH:** FABRICATED PRODUCT ONLY.
- ASSEMBLY:** DESIGNED FOR SCREW PORT ASSEMBLY WITH FLUSH CORNER JOINTS.
- SIZE LIMITATION:** MAXIMUM WIDTH 48"
FIXED HEIGHT 6- $\frac{3}{8}$ "



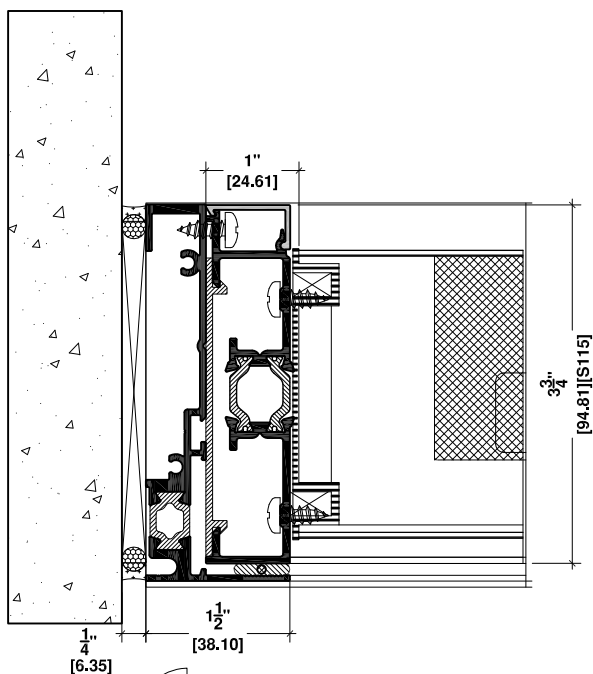
TYPICAL DETAILS



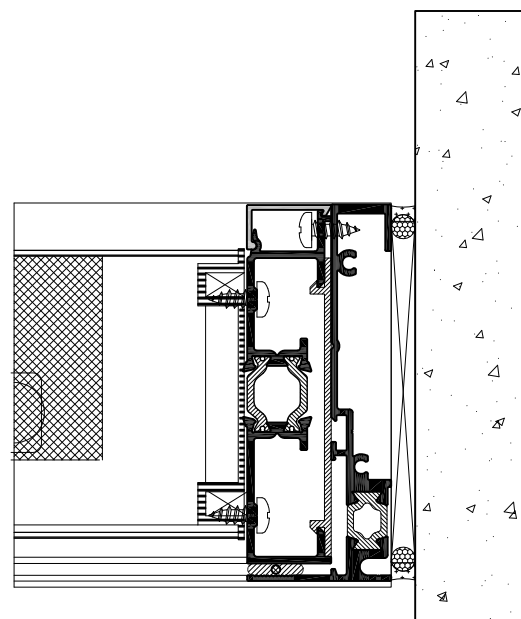
4 S425
JAMB CONDITION



5 S425
JAMB CONDITION

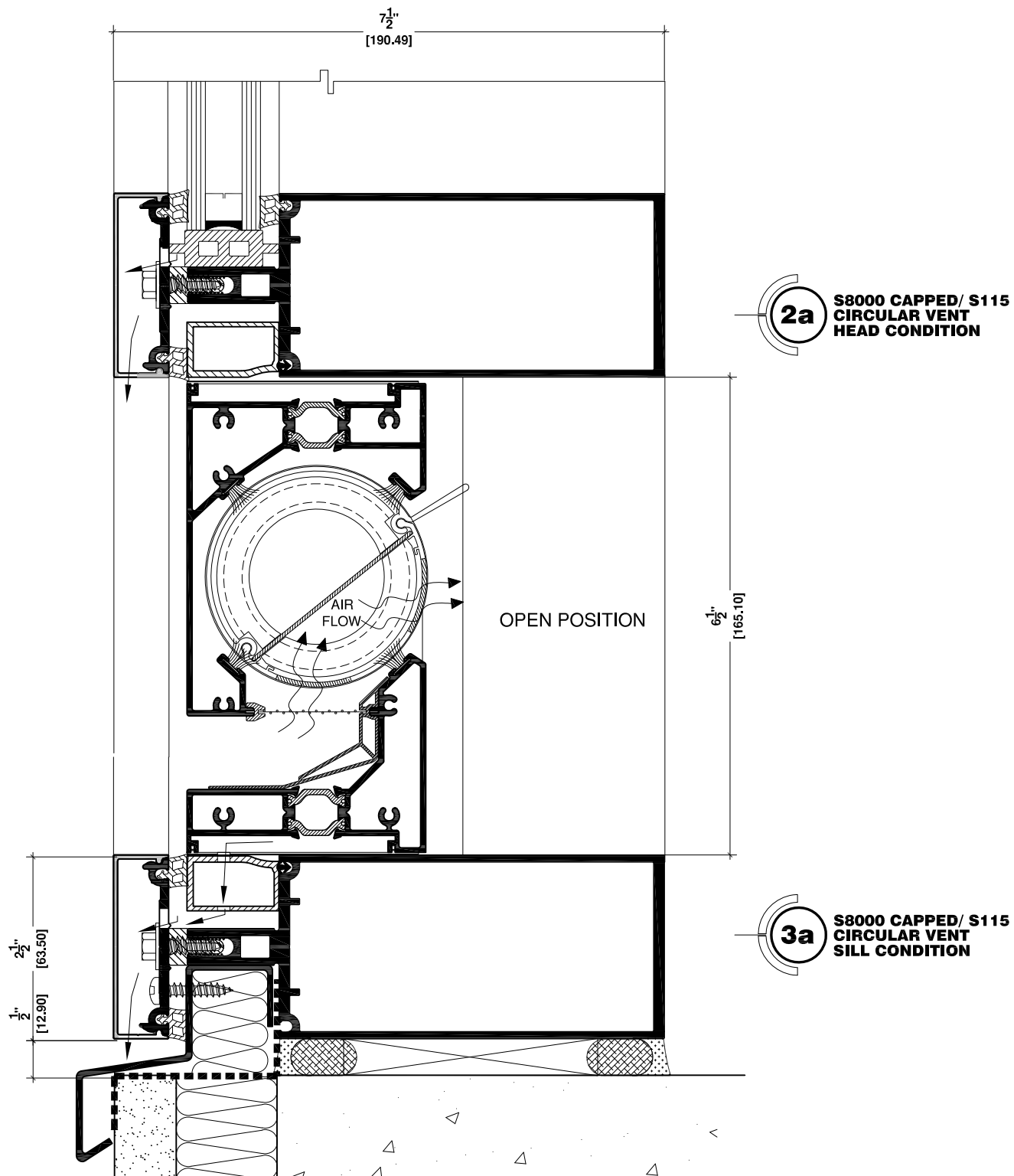


6 S425-S115
JAMB CONDITION

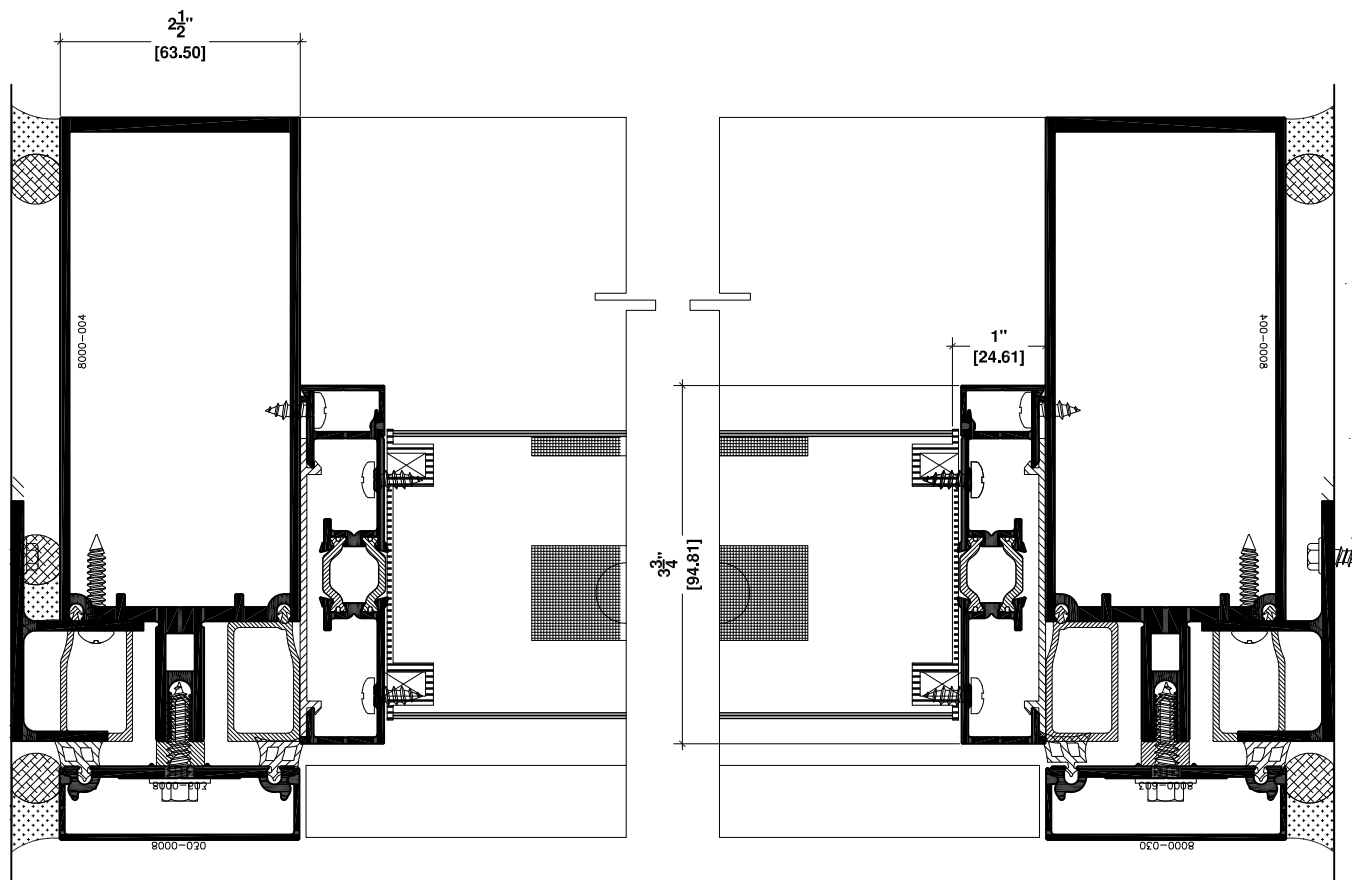


7 S425-S115
JAMB CONDITION

TYPICAL DETAILS



TYPICAL DETAILS



6a S8000 CAPPED-S115
CIRCULAR VENT
JAMB CONDITION

7a S8000 CAPPED-S115
CIRCULAR VENT
JAMB CONDITION

TYPICAL DETAILS

AWSF TEST RESULTS

TEST	RESULTS
Air Leakage Rate Test Pressure 300 Pa (6.24 psf)	0.48 L/sec/m ² (0.10 cfm/ft ²)
Water Pressure Achieved	720 Pa (15.03 psf)
Maximum Structural Pressure Achieved	Test Pressure of 5760 Pa (120.0 psf) Positive load deflection - 0.7 mm (0.029 in) Negative load deflection - 0.4 mm (0.019 in)