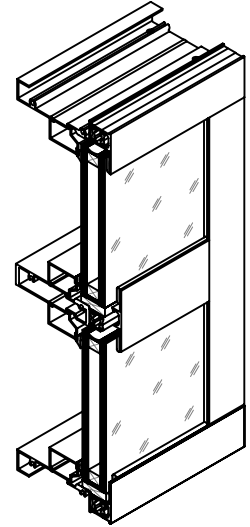


TECHNICAL DATA

SERIES 410/411/412 THERMALLY BROKEN WINDOW



DESCRIPTION:

THERMALLY BROKEN FIXED WINDOW SYSTEM, WITH FLAT FACE.
410 SERIES = 3-1/2" (88.9mm) O.A. DEPTH
411 SERIES = 4" (101.6mm) O.A. DEPTH
412 SERIES = 5" (127.0mm) O.A. DEPTH

COMPATIBILITY:

ACCEPTS 211 SERIES VENTS & CASEMENTS. NOT SUITABLE FOR ENTRANCE APPLICATIONS.

FINISH:

MOST PROFILES ARE STOCKED IN #17 CLEAR AND #40 BRONZE ANODIZED. OTHER ANODIZED AND PAINT FINISHES ARE AVAILABLE UPON REQUEST. DIFFERENT FINISHES EXTERIOR AND INTERIOR ARE AVAILABLE.

STOCK LENGTH:

24'-2" (7.37 METERS).

ASSEMBLY:

DESIGNED FOR SCREW PORT ASSEMBLY WITH OVERLAPPED OR FLUSH CORNER JOINTS.

STRENGTH:

REFER TO WIND LOAD CHARTS FOR MAXIMUM ALLOWABLE SPANS.

ANCHORING:

REFER TO FABRICATION AND INSTALLATION MANUAL.

GLAZING:

410/411/412 SERIES IS AN INTERIOR GLAZED SYSTEM AND WILL ACCEPT 1" (25mm) SEALED UNITS OR 1-7/16" (36mm) TRIPLE GLAZED OR PANELS.