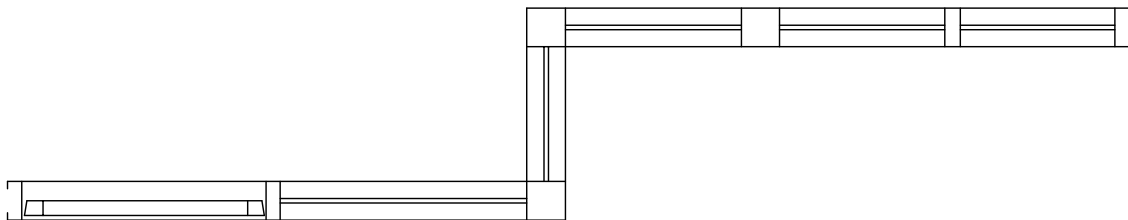
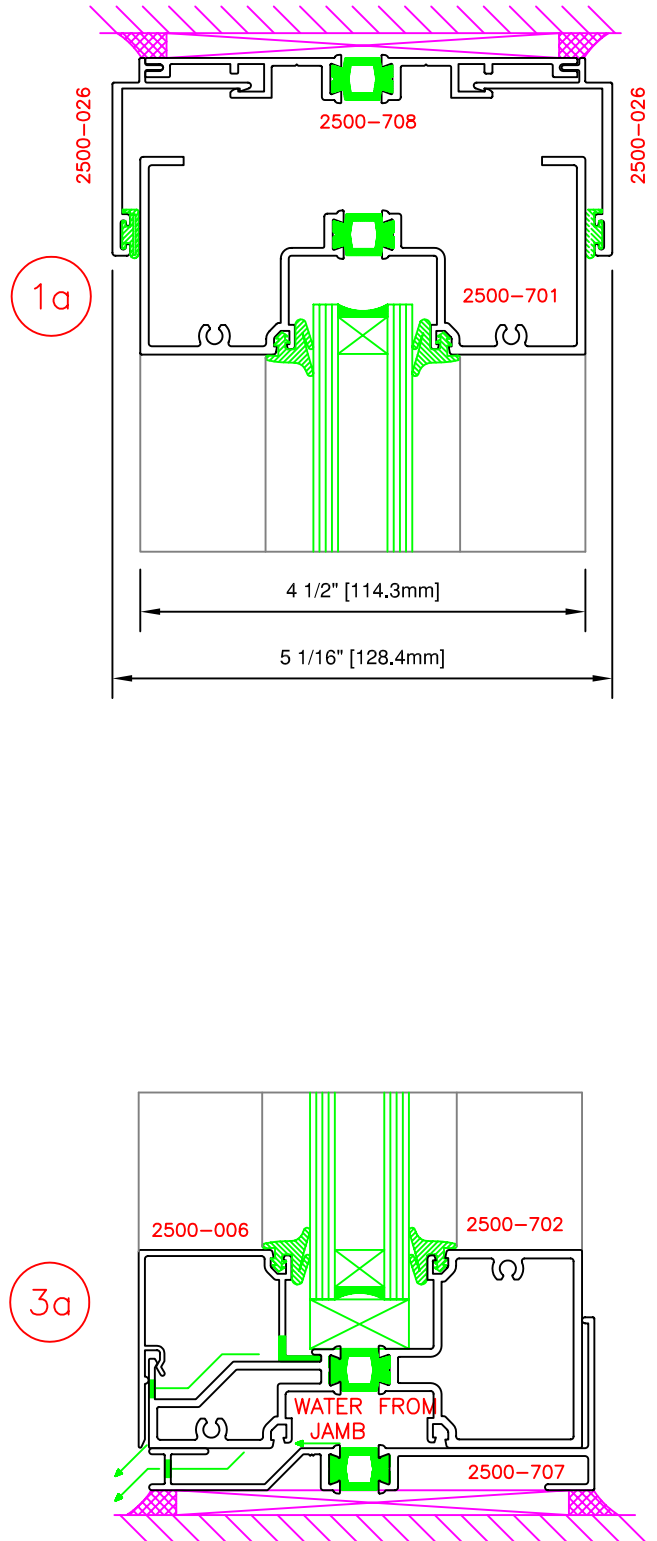
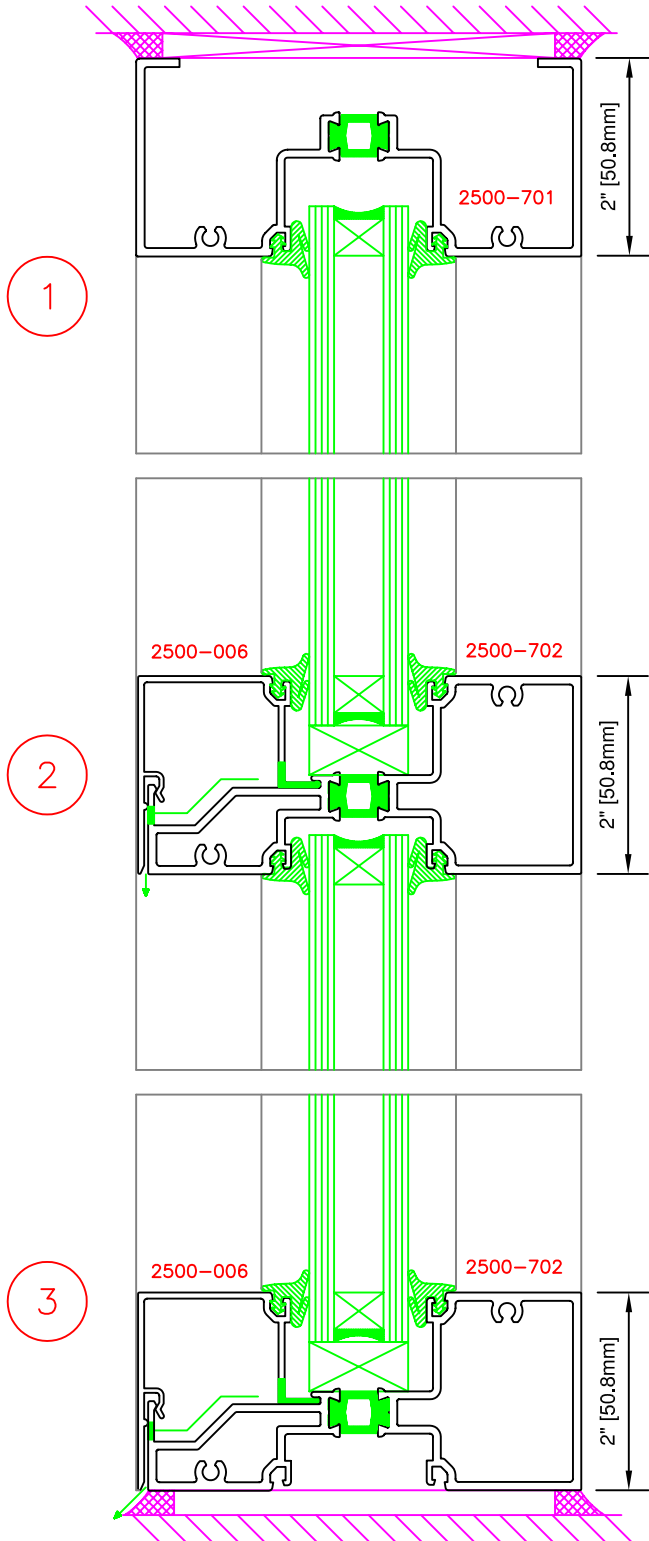


ELEVATION



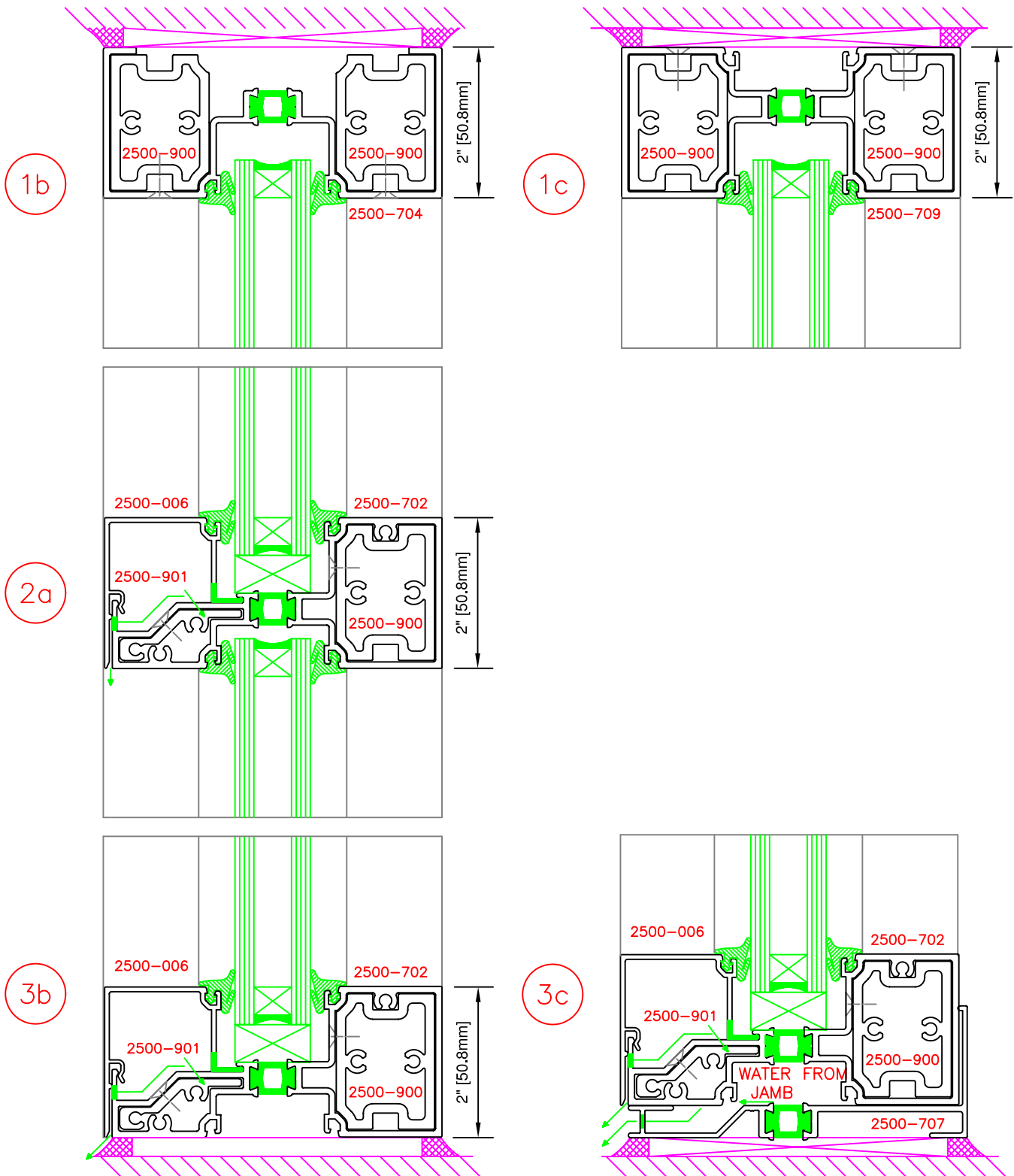
PLAN

**TYPICAL ELEVATION & PLAN VIEW**



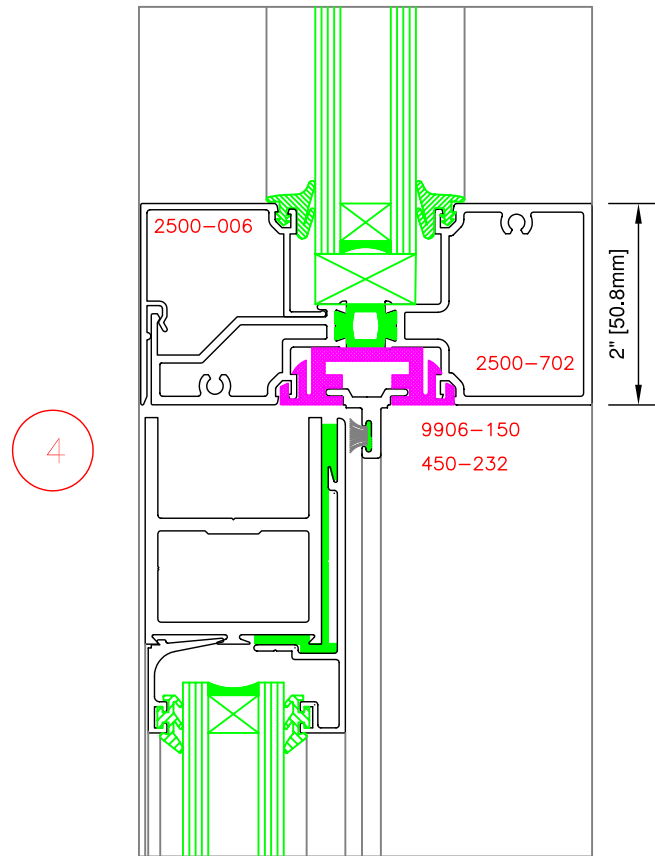
**SCREW PORT APPLICATION**

**TYPICAL DETAILS**

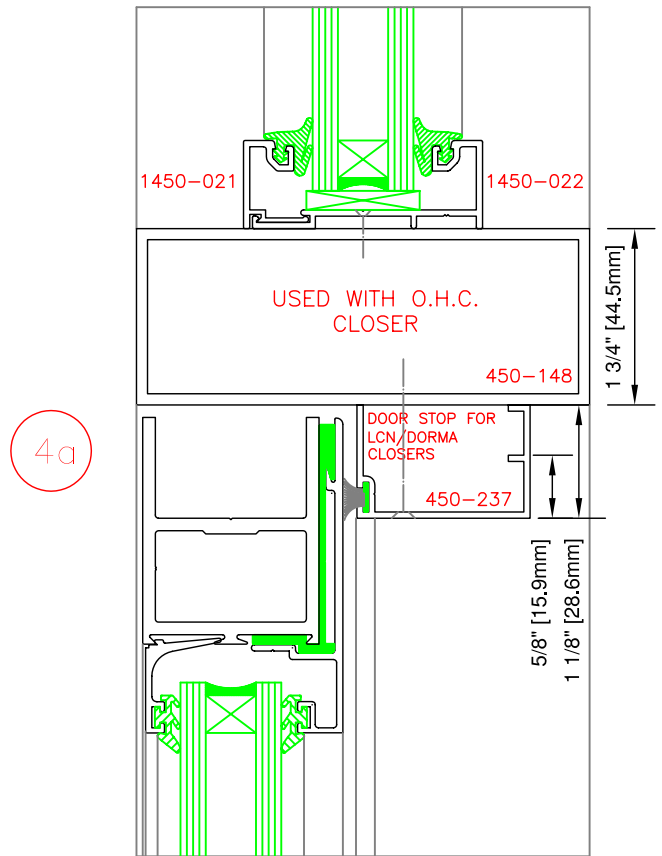


**BRACKET APPLICATION**

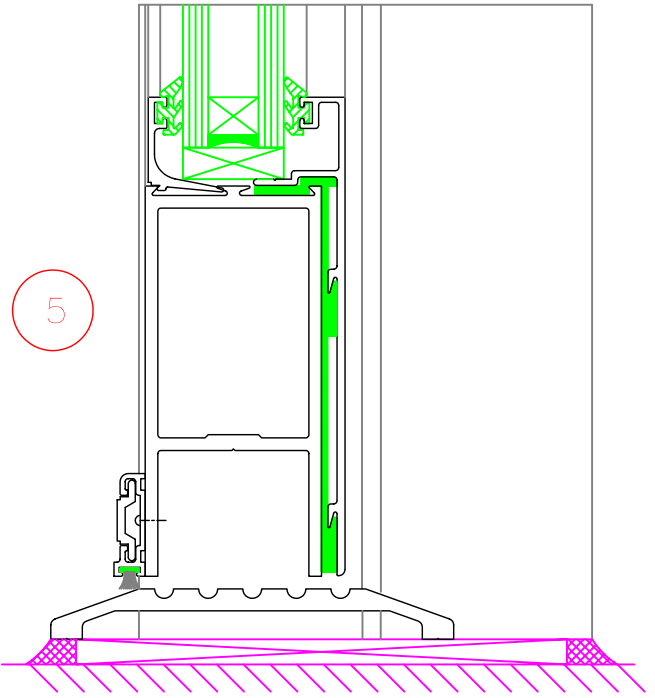
**TYPICAL DETAILS**



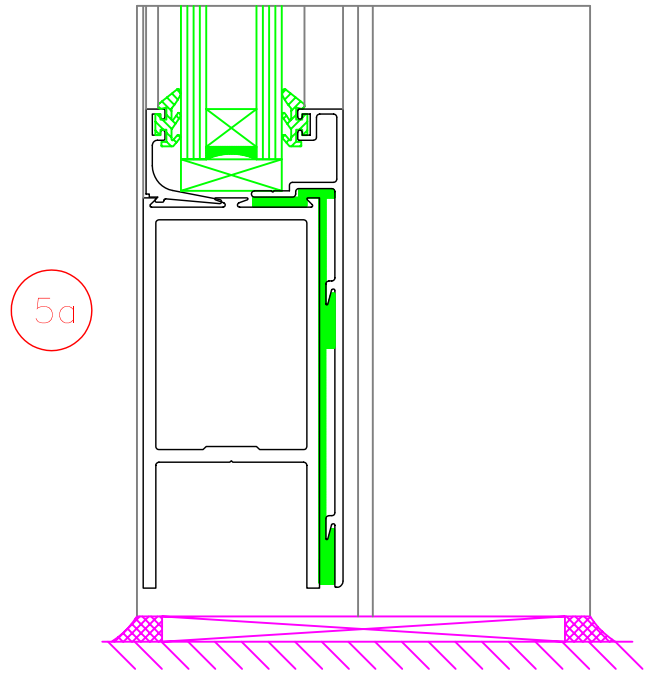
4



4a

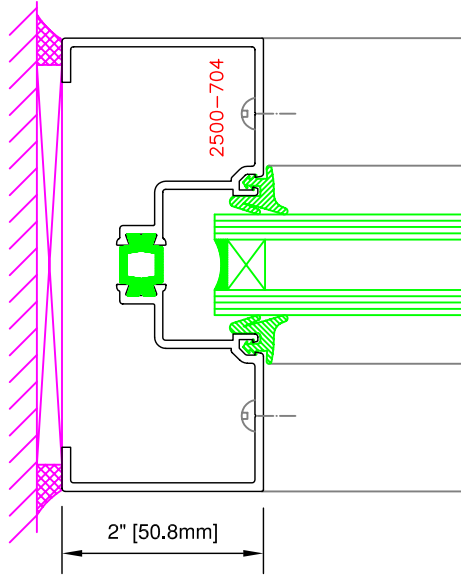


5

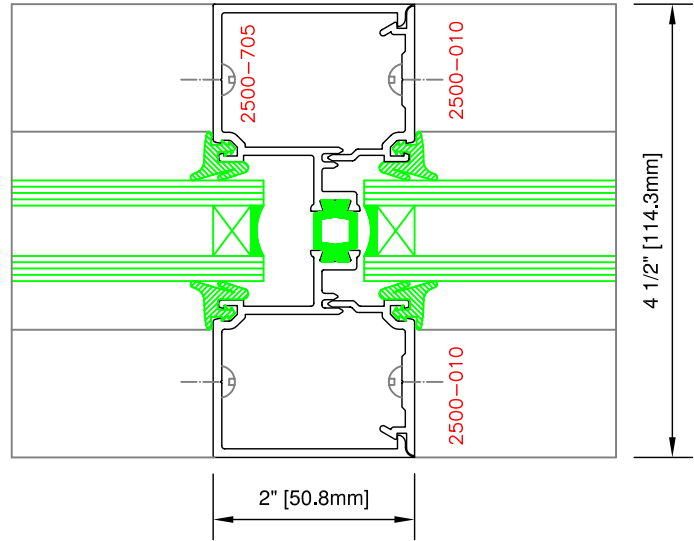


5a

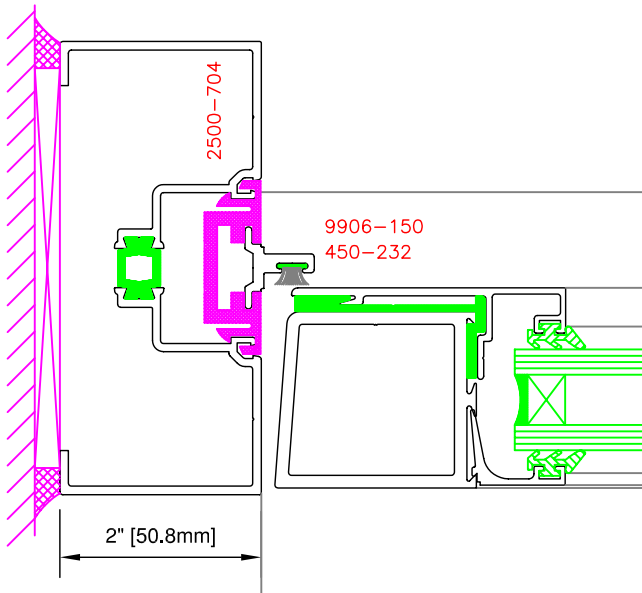
**TYPICAL DETAILS**



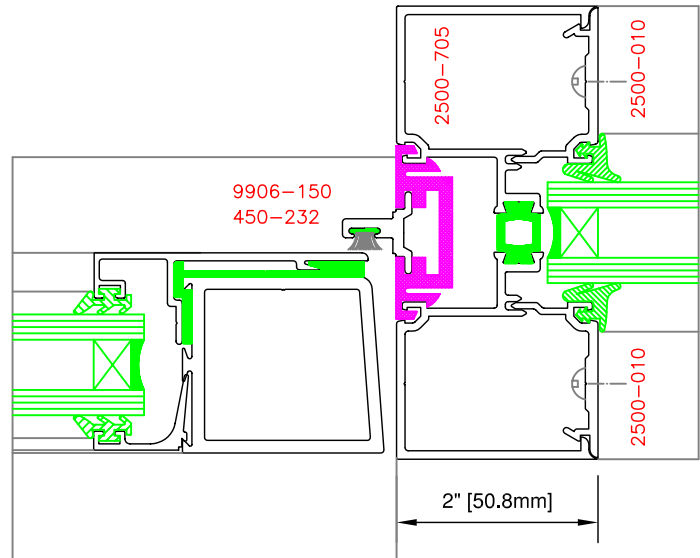
6



7



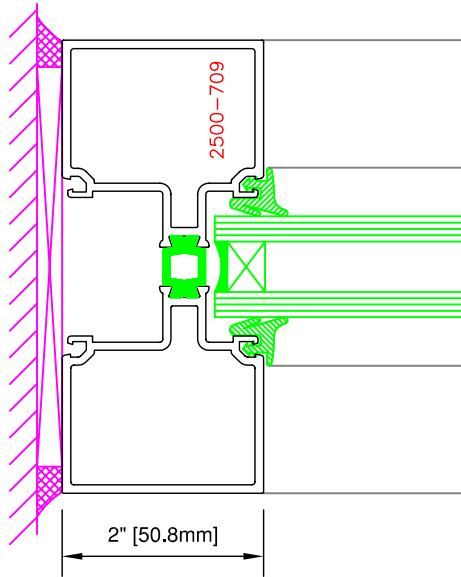
8



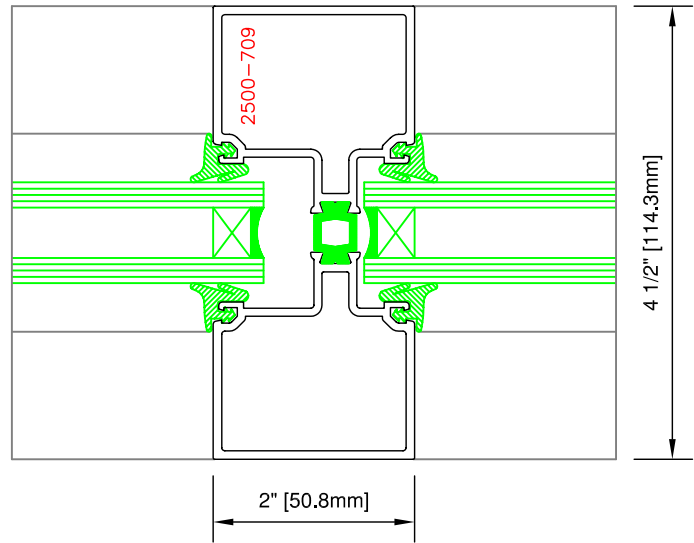
9

**SCREW PORT APPLICATION**

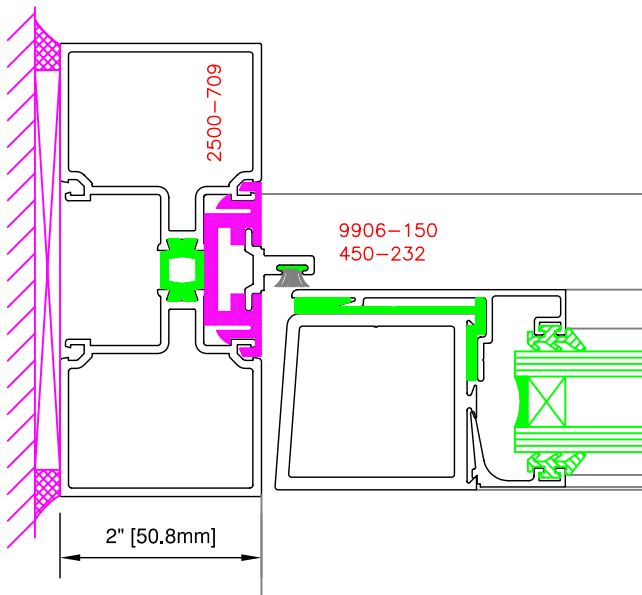
**TYPICAL DETAILS**



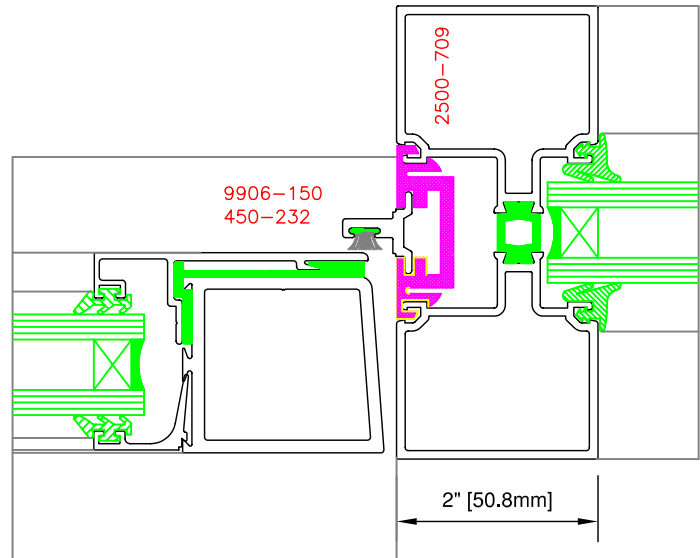
6a



7a



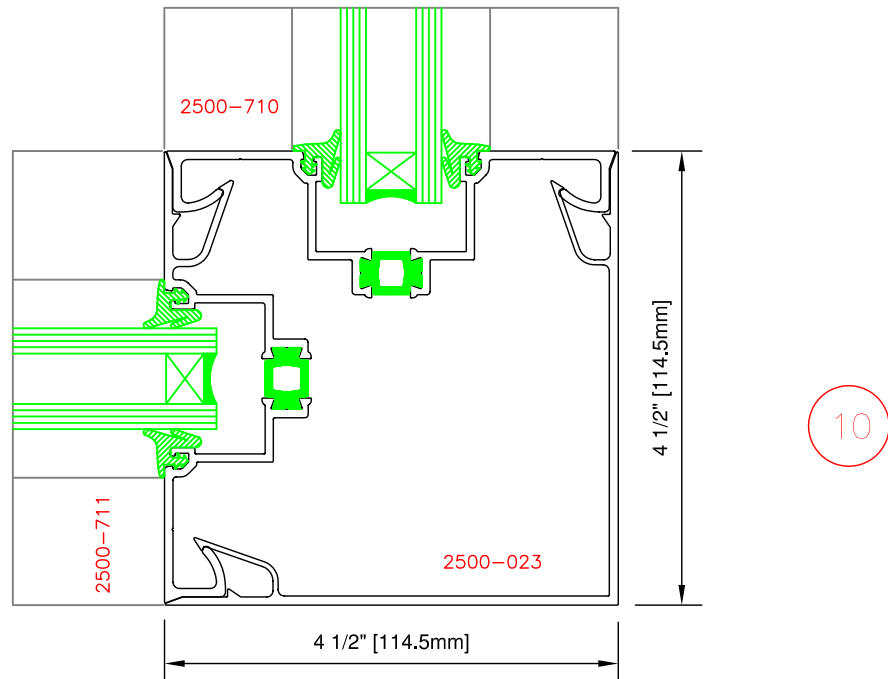
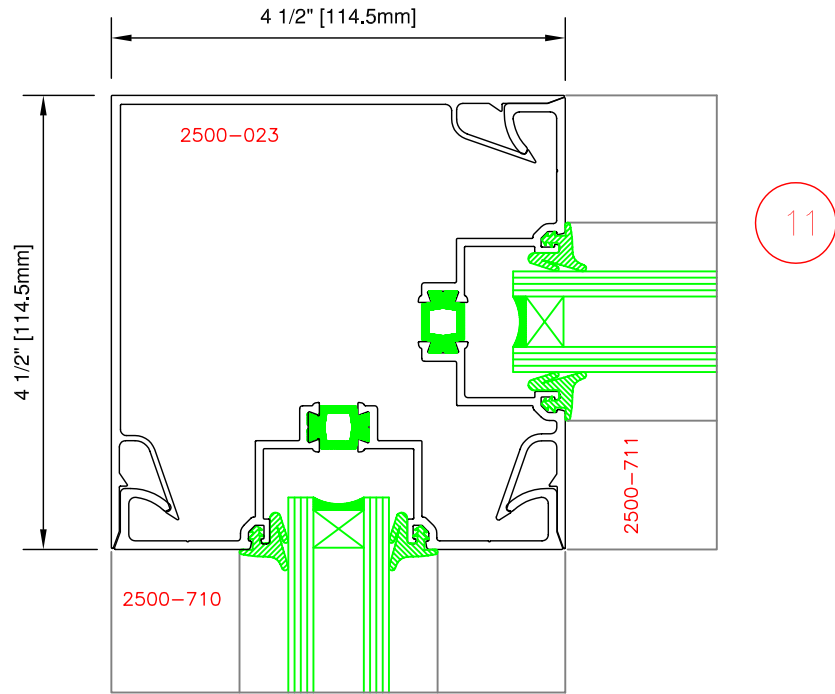
8a



9a

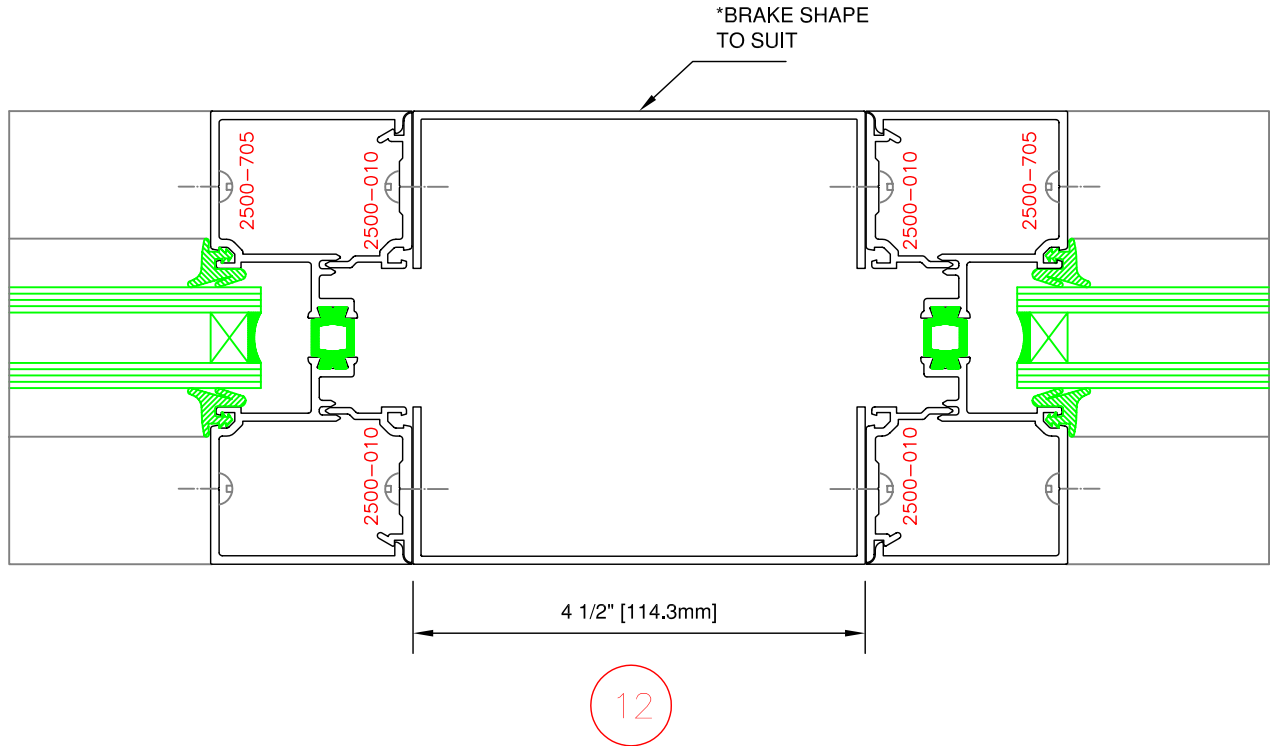
**BRACKET APPLICATION**

**TYPICAL DETAILS**

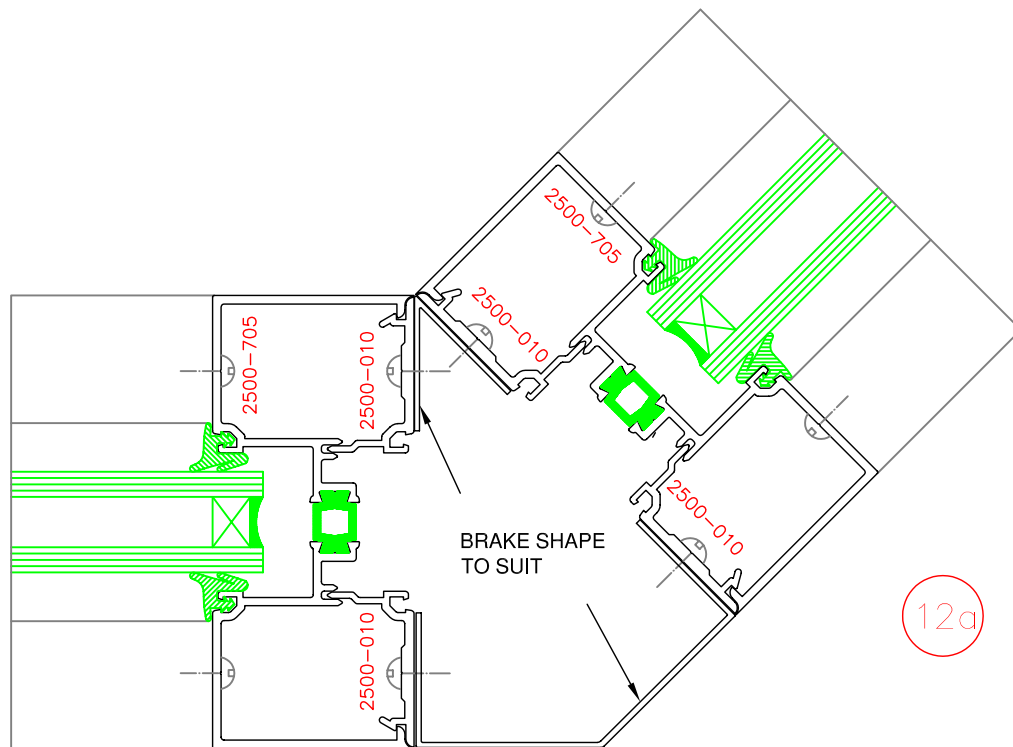


**SCREW PORT/BRACKET APPLICATION**

**TYPICAL DETAILS**

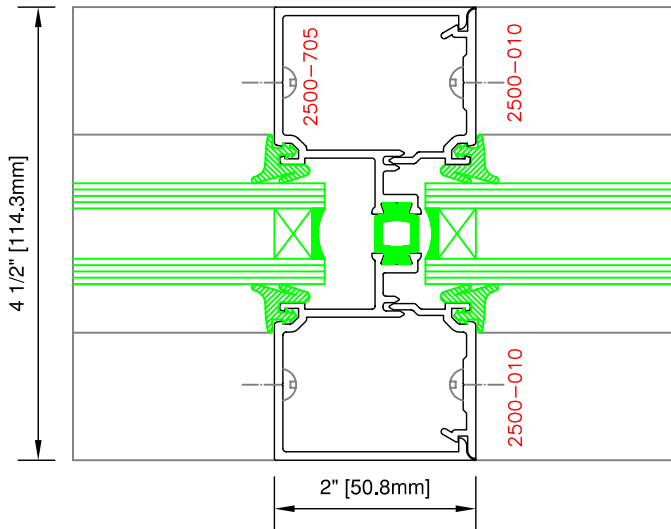


\* BRAKE SHAPE TO SUIT OR CUT # 450-119 SQUARE TUBE 4 1/2" x 4 1/2" (114.3 mm x 114.3 mm).



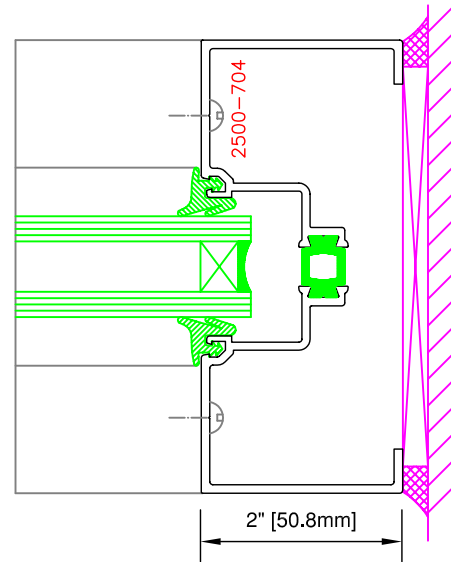
SCREW PORT/BRACKET APPLICATION

**TYPICAL DETAILS**



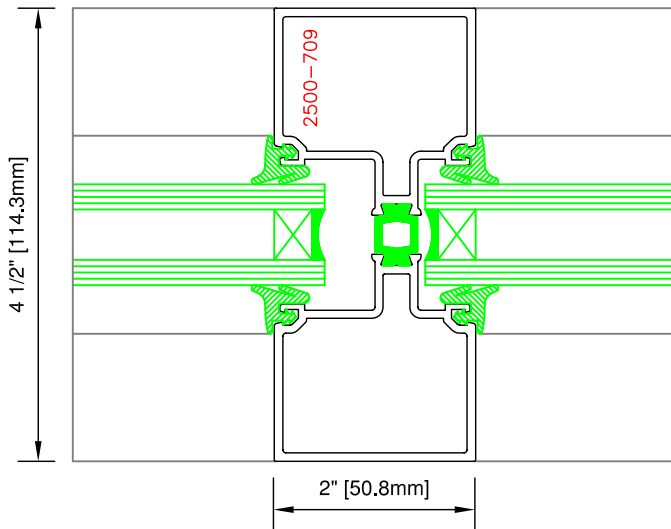
13

SCREW PORT APPLICATION



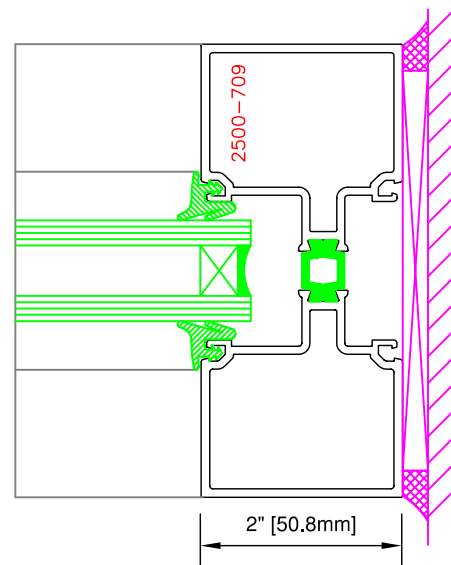
14

SCREW PORT/BRACKET APPLICATION



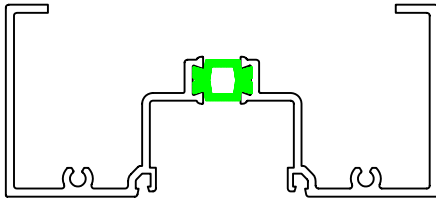
13a

BRACKET APPLICATION

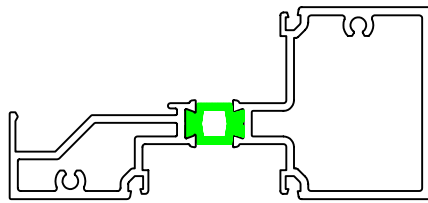


14a

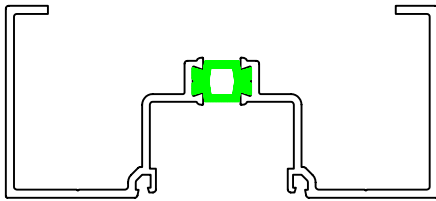
**TYPICAL DETAILS**



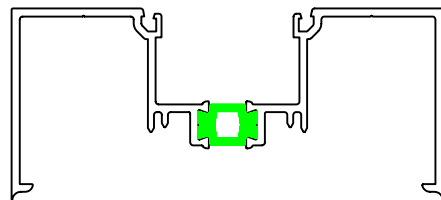
PART #:2500-701  
FRAME HEADER  
2" x 4-1/2"  
(50.8 mm x 114.3 mm)



PART #:2500-702  
HORIZONTAL MULLION  
2" x 4-1/2"  
(50.8 mm x 114.3 mm)

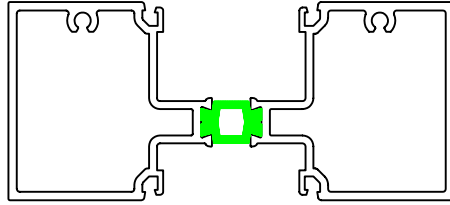


PART #:2500-704  
FRAME JAMB  
2" x 4-1/2"  
(50.8 mm x 114.3 mm)

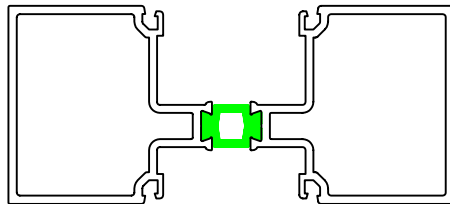


PART #:2500-705  
OPEN BACK VERTICAL  
2" x 4-1/2"  
(50.8 mm x 114.3 mm)

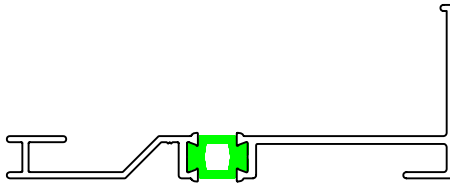
**SYSTEM COMPONENTS**



PART #:2500-706  
MULLION TWO POCKET  
2" x 4-1/2"  
(50.8 mm x 114.3 mm)



PART #:2500-709  
MULLION TWO POCKET  
2" x 4-1/2"  
(50.8 mm x 114.3 mm)

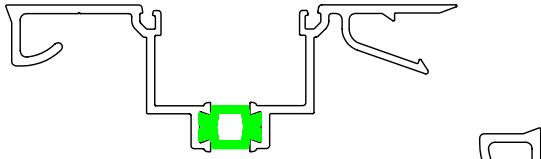


PART #:2500-707  
SILL BASE  
1/2" x 4-1/2"  
(12.7 mm x 114.3 mm)

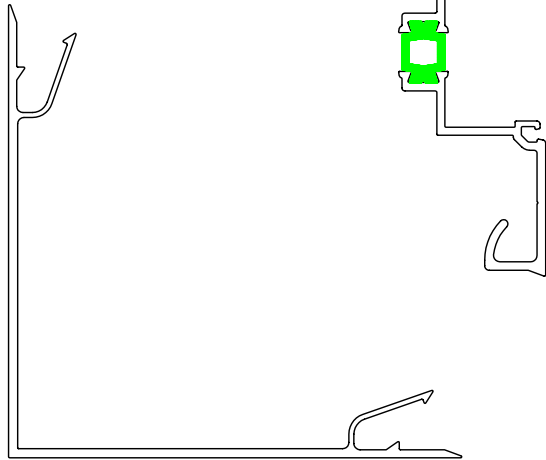


PART #:2500-708  
HEAD DEFLECTOR  
2" x 4-1/2"  
(50.8 mm x 114.3 mm)

**SYSTEM COMPONENTS**



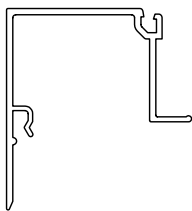
PART #:2500-711  
CORNER MULLION  
(FEMALE)



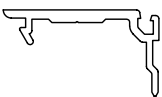
PART #:2500-710  
CORNER MULLION  
(MALE)



PART #:2500-023  
CORNER MULLION  
EXTERIOR

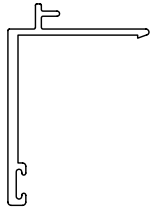


PART #:2500-006  
GLASS STOP  
USE WITH  
PART #:2500-702 & 703



PART #:2500-010  
GLAZING ADAPTOR  
USE 2 STOCK LENGTHS WITH  
PART #:2500-705

## SYSTEM COMPONENTS



PART #:2500-026  
HEAD DEFLECTOR ADAPTOR  
USE 2 STOCK LENGTHS WITH  
PART #:2500-708



PART #:2500-020  
SINGLE GLAZING ADAPTOR  
FOR 1/4" & 1/2" GLASS  
(VERIFY PROPER SPLINE)



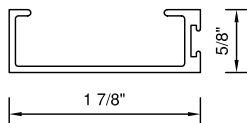
PART #: 450-230  
POCKET FILLER  
USE WITH ADAPTOR  
PART #: 9906-150



PART #: 450-231  
DOOR STOP  
FOR 1-3/4" (44.5mm)  
THICK DOOR  
USE WITH ADAPTOR  
PART #: 9906-150

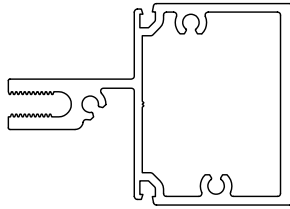


PART #: 450-232  
DOOR STOP  
FOR 2" (50.8mm)  
THICK DOOR  
USE WITH ADAPTOR  
PART #: 9906-150

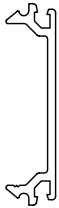


PART #: 450-233  
DOOR STOP  
FOR LCN CLOSER

## SYSTEM COMPONENTS



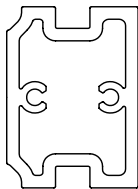
PART #:2500-100  
MULLION  
FOR CURVED HEADER



PART #:2500-101  
PRESSURE PLATE  
USE WITH  
PART #: 2500-100



PART #:2500-102  
SNAP ON CAP  
USE WITH  
PART #: 2500-101


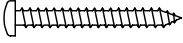
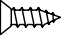


PART #:2500-900  
MULLION / SILL BRACKET  
USE WITH PART #:  
2500-701, -702, -703 & -704



PART #:2500-901  
MULLION / SILL BRACKET  
USE WITH PART #:  
2500-702 & -703

**SYSTEM COMPONENTS**

| DRAWING   | DESCRIPTION                                | APPLICATION                                 | QTY/<br>JOINT |
|---|--|---|---------------|
|    | PART #:9902-404<br># 10 X 1"<br>PH SCREW   | TO FASTEN<br>VERTICAL TO<br>EACH HORIZONTAL | 2             |
|    | PART #:9902-309<br># 8 X 2"<br>PH SCREW    | TO FASTEN<br>TWO BRACKETS<br>TO VERTICAL    | 4             |
|  | PART #:9902-401<br># 10 X 5/8"<br>FH SCREW | TO FASTEN<br>HORIZONTAL<br>TO BRACKET       | 2             |

**SYSTEM FASTENERS**



9903-140



9903-141



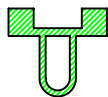
9903-142

FOR APPLICATION USE THE FOLLOWING TABLE:

| GLASS THICKNESS | INTERIOR SPLINE | EXTERIOR SPLINE |
|-----------------|-----------------|-----------------|
| 15/16" (24mm)   | 9903-142        | 9903-141        |
| 1" (25mm)       | 9903-141        | 9903-141        |
| 1-1/16" (27mm)  | 9903-141        | 9903-140        |



PART #:9905-100  
WEATHER STRIPPING  
FOR DOOR STOP



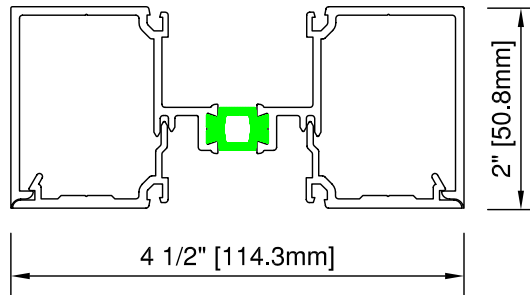
PART #:9903-001  
THERMAL BREAK  
FOR PART #: 2500-100



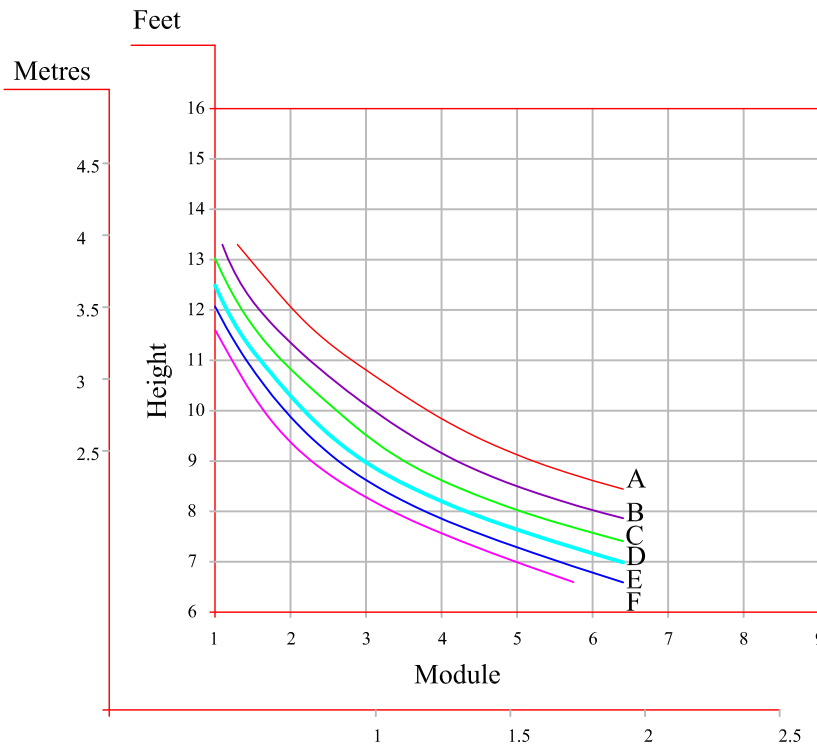
PART #:9906-150  
DOOR STOP  
VINYL

**SYSTEM GLAZING SPLINE AND WEATHERING**

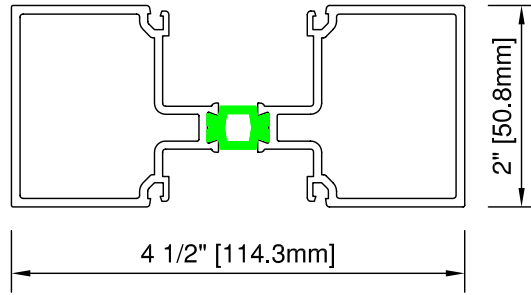
2500-010  
GLAZING ADAPTOR  
2500-705  
OPEN BACK VERTICAL  
2" x 4-1/2"  
(50.8 mm x 114.3 mm)



A = 20 psf (0.9 KPa)  
B = 25 psf (1.2 KPa)  
C = 30 psf (1.4 KPa)  
D = 35 psf (1.7 KPa)  
E = 40 psf (1.9 KPa)  
F = 45 psf (2.1 KPa)



2500-709  
MULLION TWO POCKET  
2" x 4-1/2" (50.8 mm x 114.3mm)



- A = 20 psf (0.9 KPa)
- B = 25 psf (1.2 KPa)
- C = 30 psf (1.4 KPa)
- D = 35 psf (1.7 KPa)
- E = 40 psf (1.9 KPa)
- F = 45 psf (2.1 KPa)

