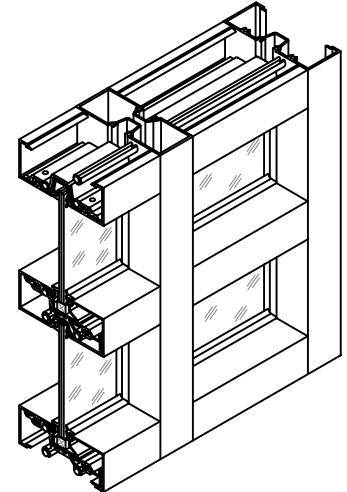


## TECHNICAL DATA

### SERIES 1450 FRAMING SYSTEM



<u>DESCRIPTION:</u>	NON-THERMALLY BROKEN FLUSH GLAZED SYSTEM. PROFILE DIM. 1-3/4" x 4-1/2" (44.5 x 114.3mm).
<u>COMPATIBILITY:</u>	DESIGNED TO SUIT ALL STANDARD DOORS AND DOOR HARDWARE.
<u>FINISH:</u>	MOST PROFILES ARE STOCKED IN #17 CLEAR AND #40 BRONZE ANODIZED. OTHER ANODIZED AND PAINT FINISHES ARE AVAILABLE UPON REQUEST.
<u>STOCK LENGTH:</u>	24'-2" (7.37 METERS).
<u>ASSEMBLY:</u>	DESIGNED FOR SCREW PORT AND/OR BRACKET ASSEMBLY.
<u>STRENGTH:</u>	REFER TO WIND LOAD CHARTS FOR MAXIMUM ALLOWABLE SPANS.
<u>ANCHORING:</u>	REFER TO FABRICATION AND INSTALLATION MANUAL.
<u>GLAZING:</u>	1450 SERIES ACCEPTS SINGLE GLASS, REFER TO PAGE 1450-018 FOR DETAILS. THIS SYSTEM IS TYPICALLY GLAZED FROM THE EXTERIOR, BUT CAN BE GLAZED FROM THE INTERIOR, REFER TO APPLICABLE DETAILS.