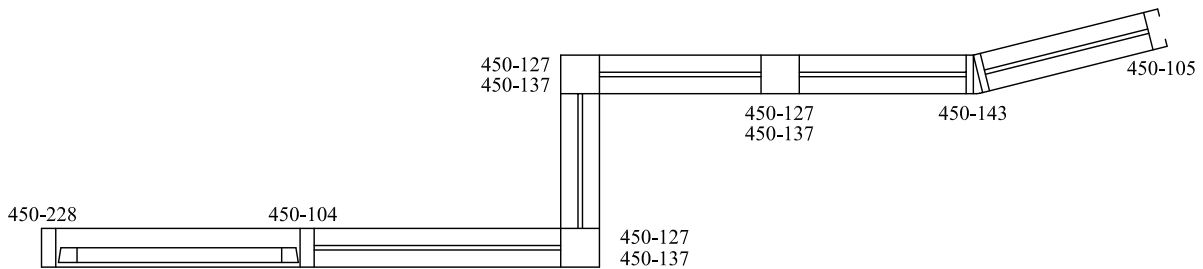
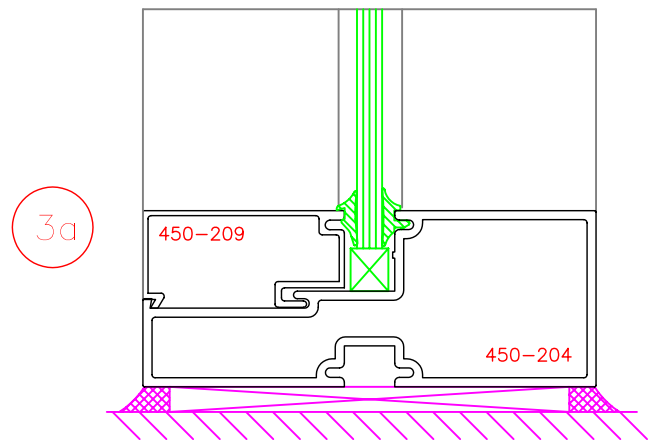
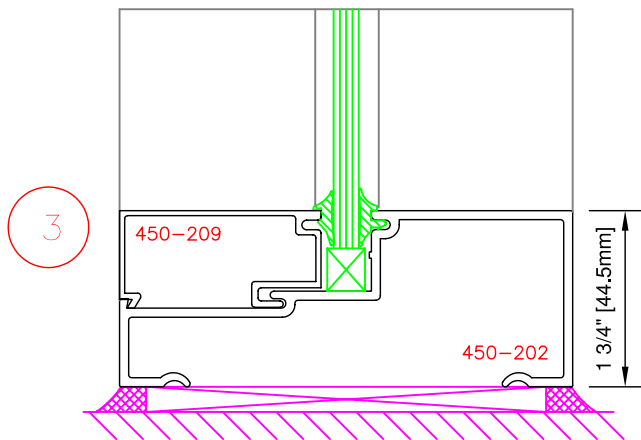
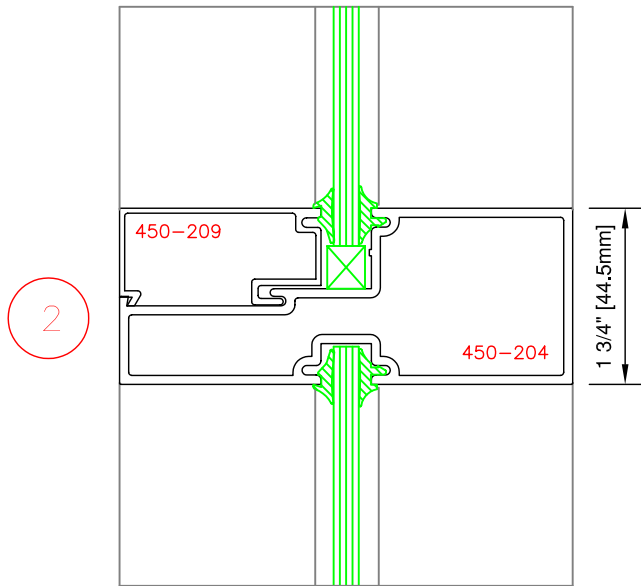
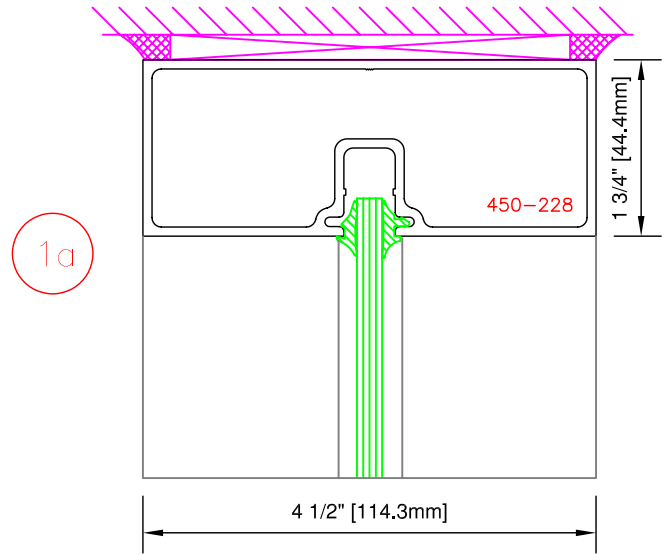
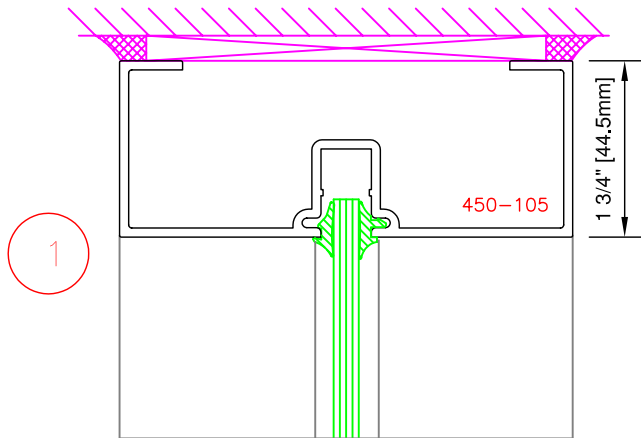


ELEVATION

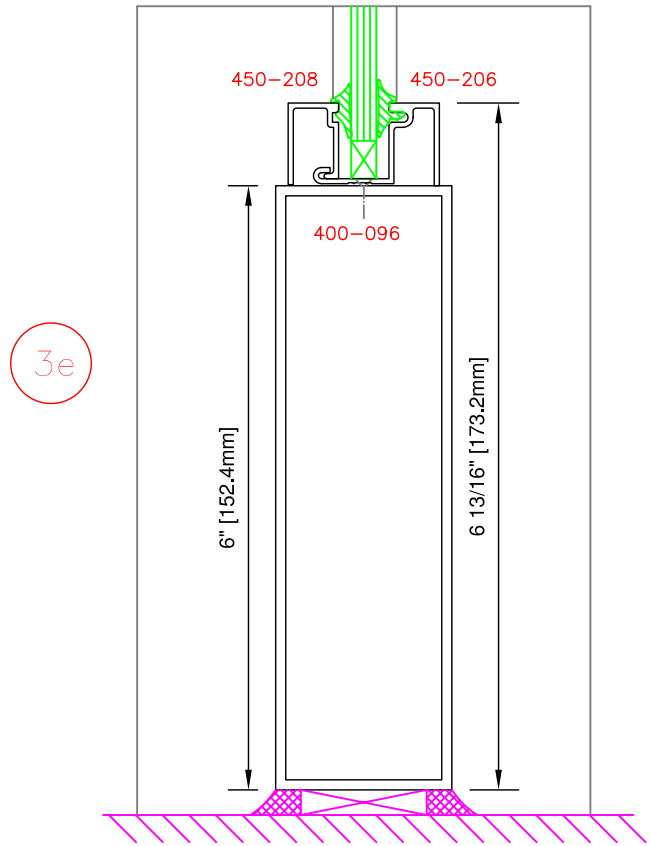
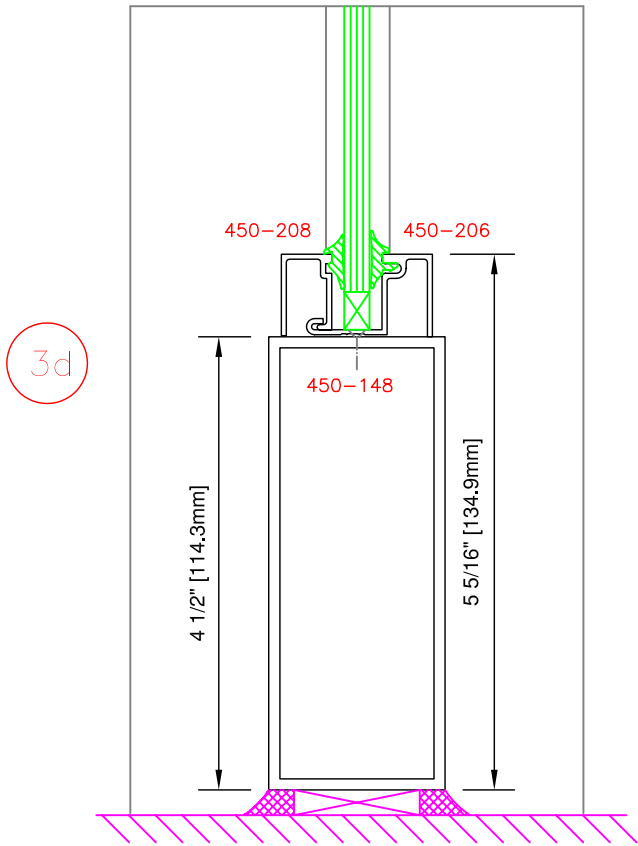
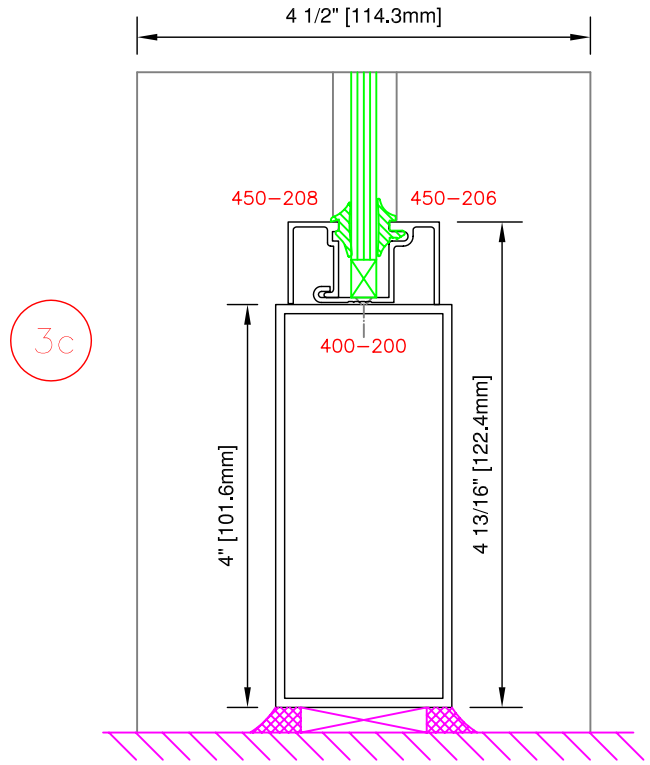
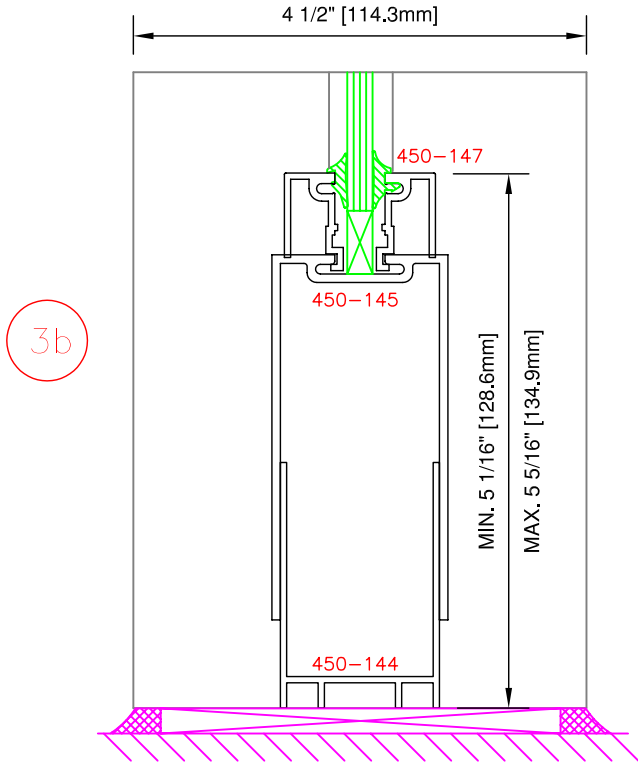


PLAN

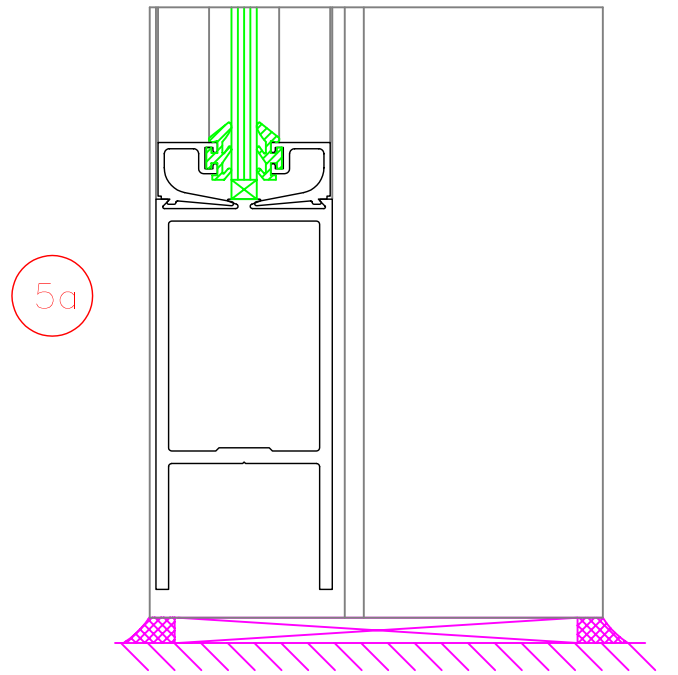
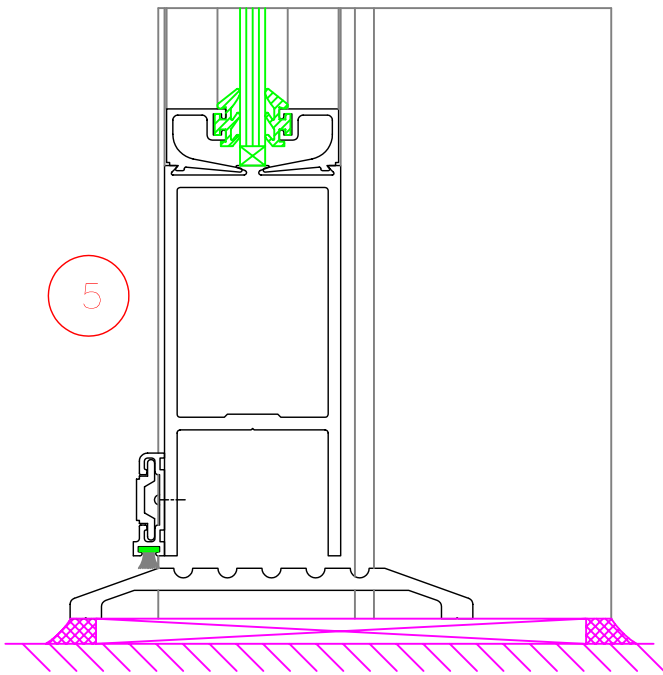
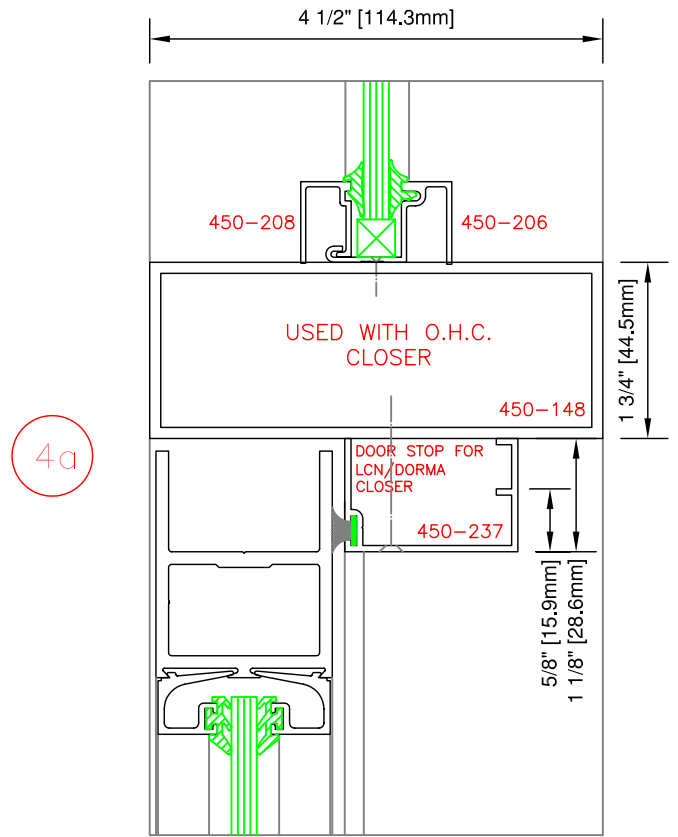
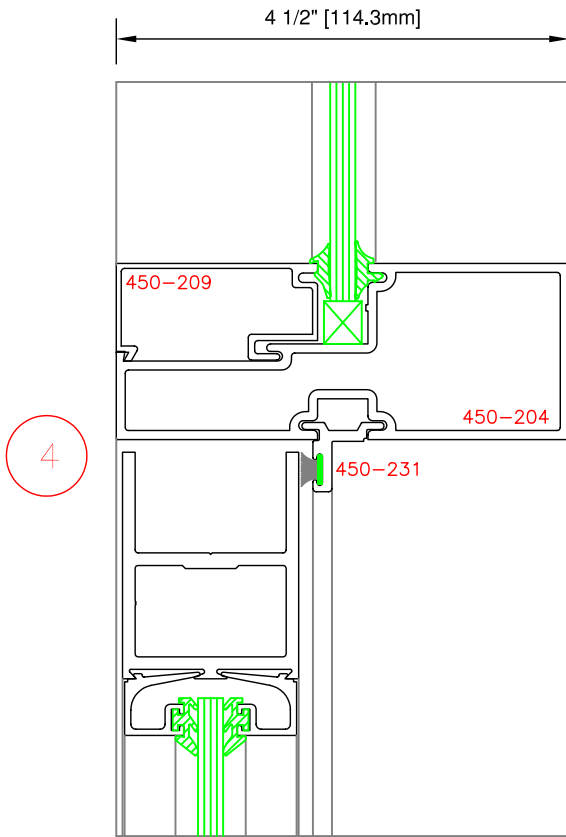
**TYPICAL ELEVATION & PLAN VIEW**



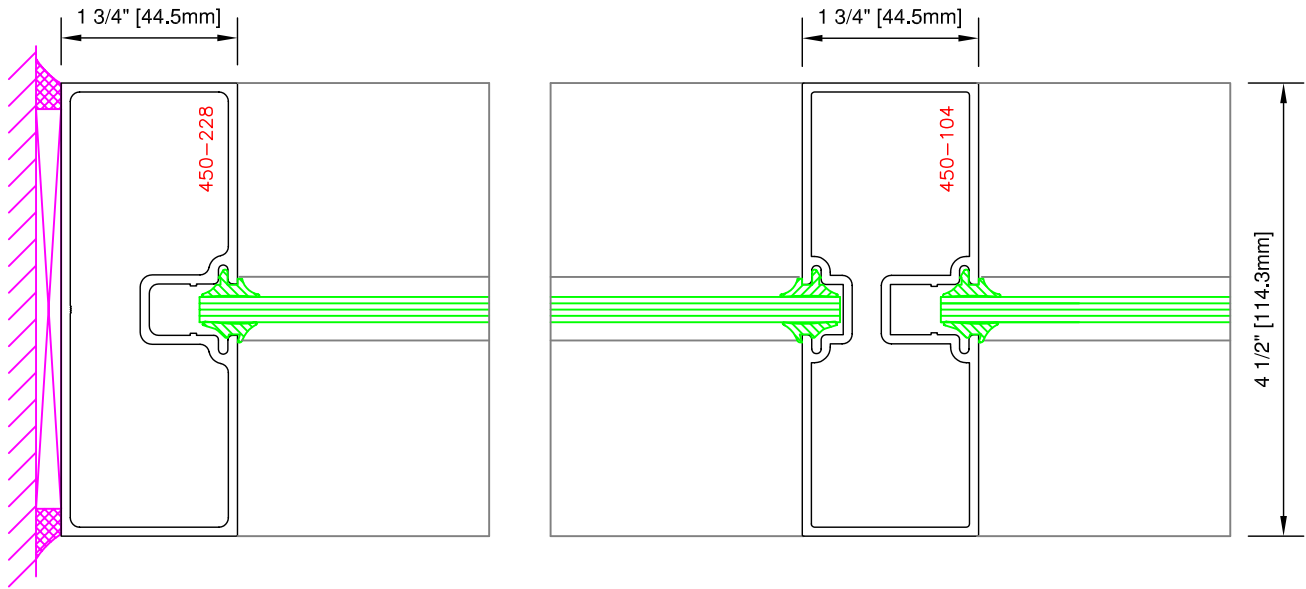
**TYPICAL DETAILS**



**TYPICAL DETAILS**

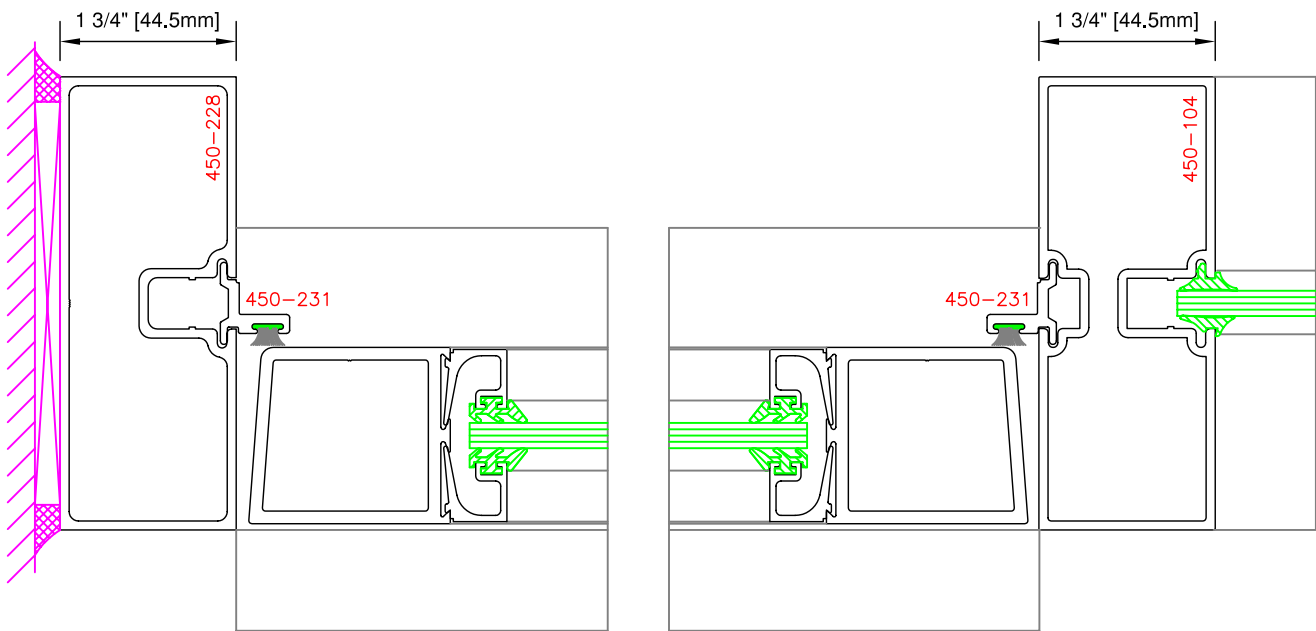


**TYPICAL DETAILS**



6

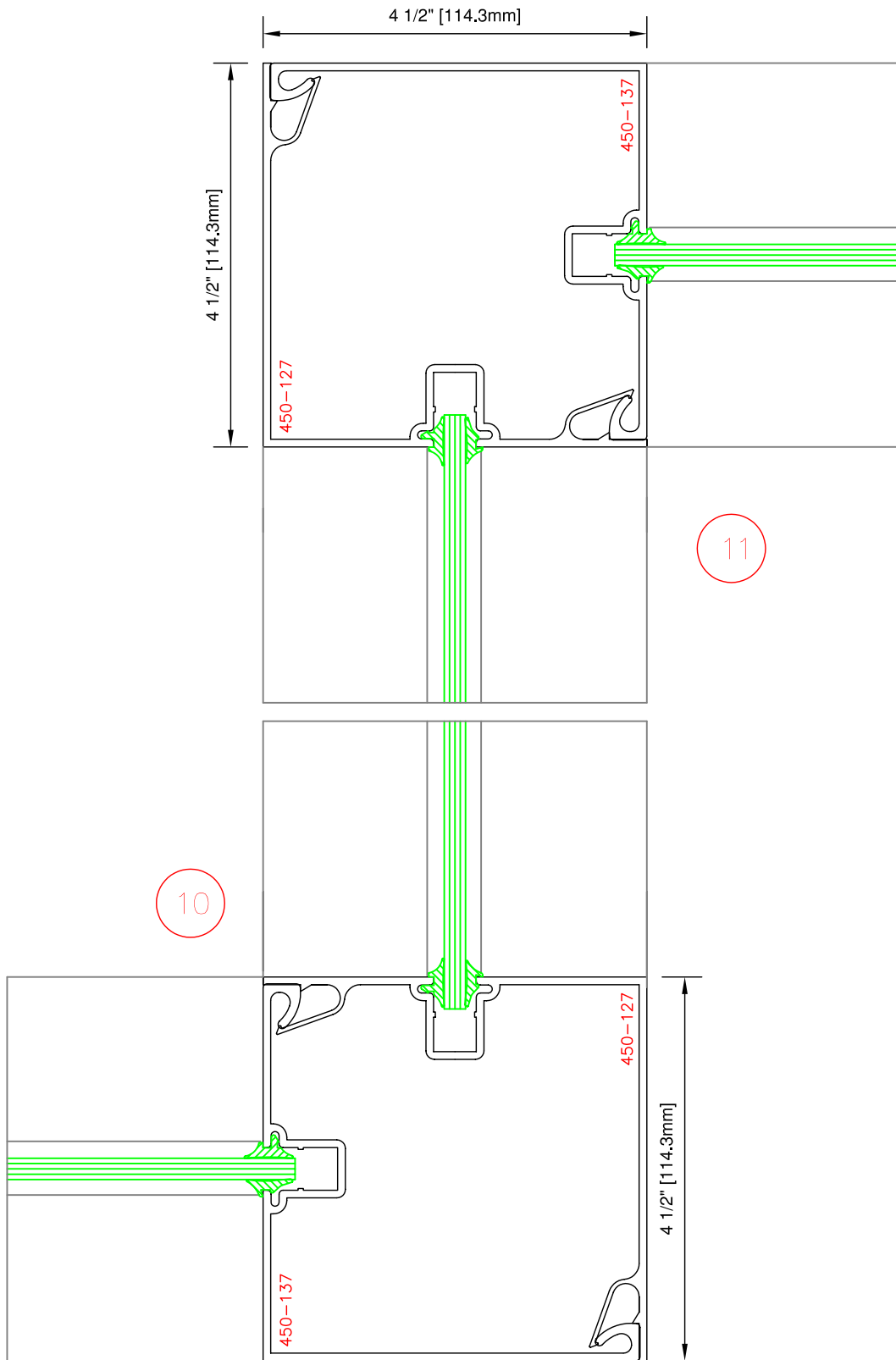
7



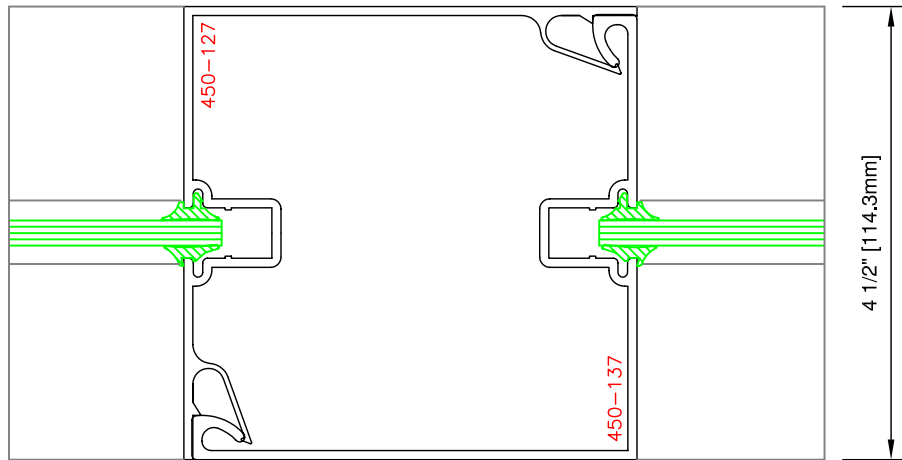
8

9

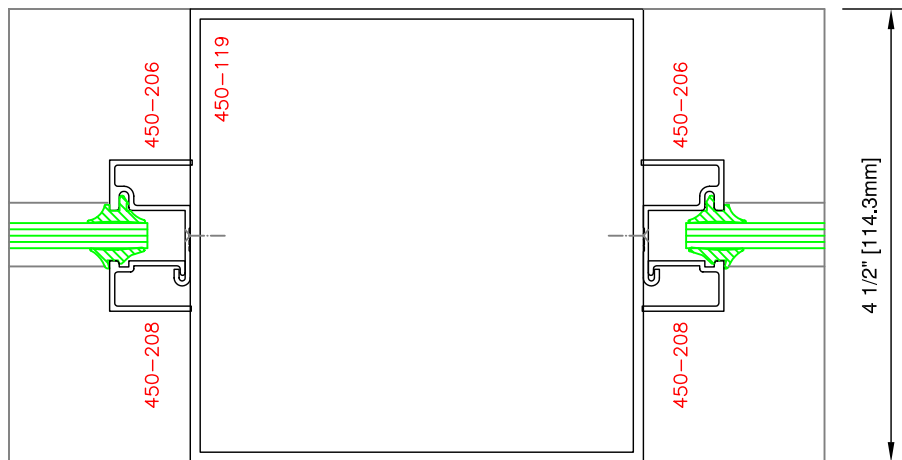
**TYPICAL DETAILS**



**TYPICAL DETAILS**

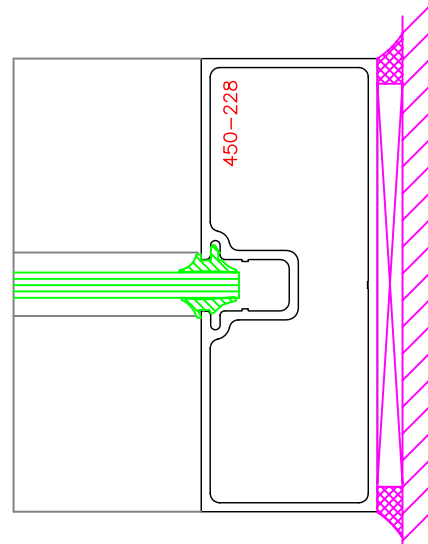
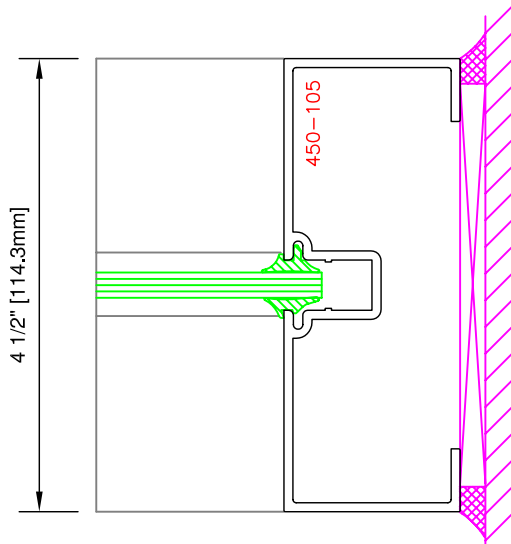
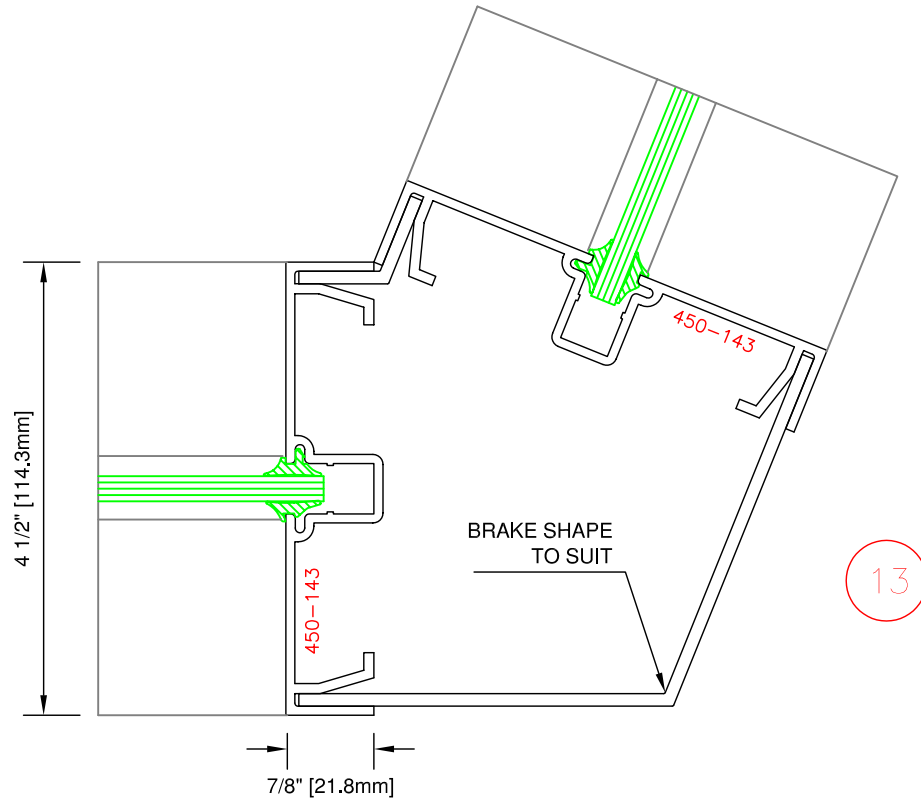


12

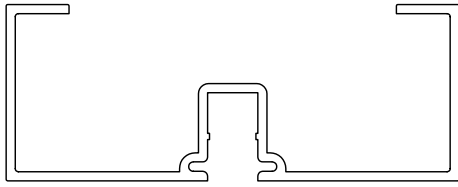


12a

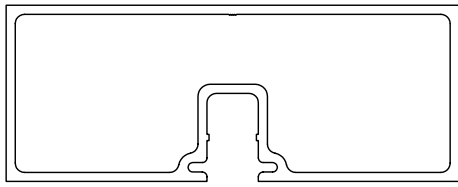
**TYPICAL DETAILS**



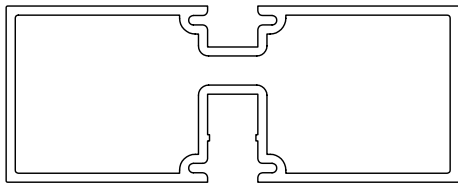
**TYPICAL DETAILS**



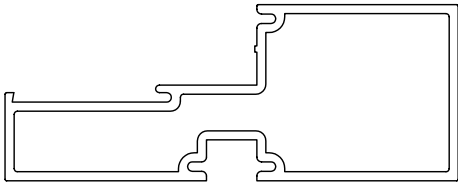
PART #: 450-105  
OPEN BACK ONE POCKET  
1-3/4" X 4-1/2"  
(44.5mm X 114.3mm)



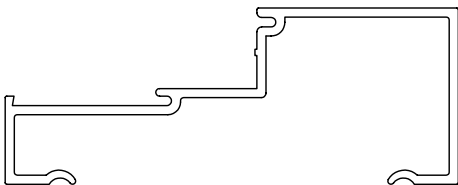
PART #: 450-228  
CLOSED BACK ONE POCKET  
1-3/4" X 4-1/2"  
(44.5mm X 114.3mm)



PART #: 450-104  
MULLION TWO POCKET  
1-3/4" X 4-1/2"  
(44.5mm X 114.3mm)



PART #: 450-204  
CLOSED BACK SILL  
1-3/4" X 4-1/2"  
(44.5mm X 114.3mm)

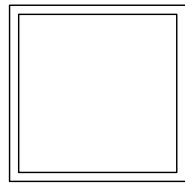


PART #: 450-202  
OPEN BACK SILL  
1-3/4" X 4-1/2"  
(44.5mm X 114.3mm)

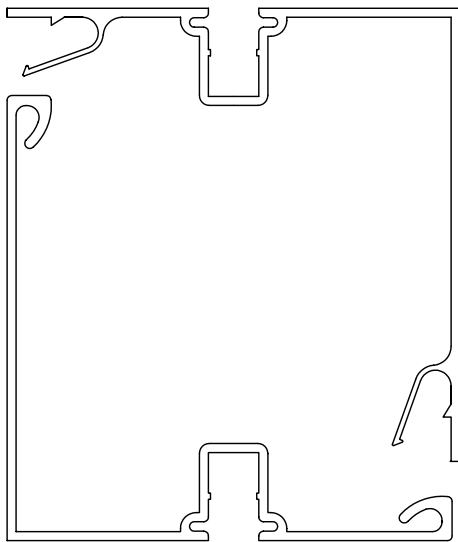
**SYSTEM COMPONENTS**



PART #: 450-209  
GLASS STOP  
FOR PART #:  
450-202 & 450-204

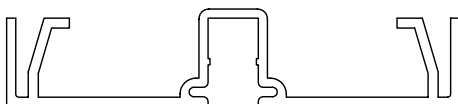


PART #: 450-110  
SQUARE TUBE  
1-3/4" X 1-3/4"  
(44.5mm X 44.5mm)



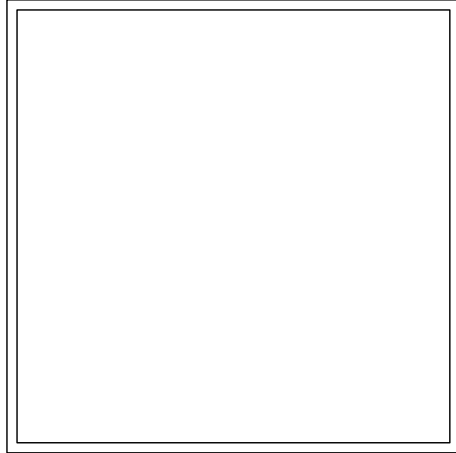
PART #: 450-127  
CORNER MULLION HALF  
(FEMALE) 4-1/2" X 4-1/2"  
(114.3mm X 114.3mm)

PART #: 450-137  
CORNER MULLION HALF  
(MALE) 4-1/2" X 4-1/2"  
(114.3mm X 114.3mm)

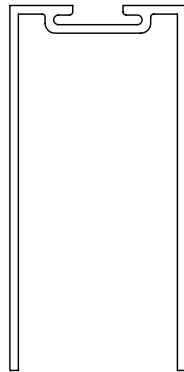


PART #: 450-143  
EXPANSION JOINT HALF  
7/8" X 4-1/2"  
(22.2mm X 114.3mm)

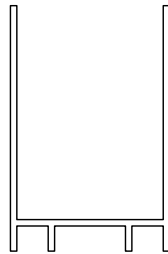
**SYSTEM COMPONENTS**



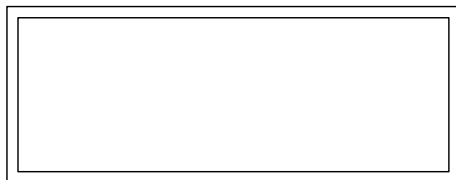
PART #: 450-119  
SQUARE TUBE  
4-1/2" X 4-1/2"  
114.3mm X 114.3mm



PART #: 450-145  
UPPER SIDELIGHT  
BASE  
USE GLASS STOP  
PART # 450-147

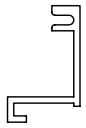


PART #: 450-144  
LOWER SIDELIGHT  
BASE



PART #: 450-148  
PLAIN TUBE  
1-3/4" X 4-1/2"  
44.5mm X 114.3mm

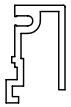
**SYSTEM COMPONENTS**



PART #: 450-146  
GLASS STOP FOR  
1" (25mm) SEALED UNIT



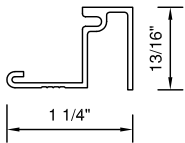
PART #: 450-231  
DOOR STOP  
FOR 1-3/4" (44.5mm)  
THICK DOOR



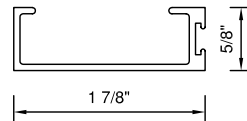
PART #: 450-147  
GLASS STOP  
USE FOR  
PART # 450-145



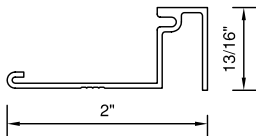
PART #: 450-232  
DOOR STOP  
FOR 2" (50.8mm)  
THICK DOOR



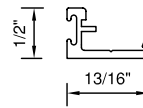
PART #: 450-206  
GLASS STOP BASE  
USE FOR  
1/4" (6mm) GLASS



PART #: 450-233  
DOOR STOP  
FOR LCN CLOSER



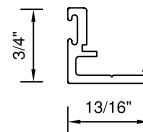
PART #: 450-207  
GLASS STOP BASE  
USE FOR  
1" (25mm) SEALED UNIT



PART #: 450-234  
DOOR STOP BASE  
1/2" (12.7mm)



PART #: 450-208  
SNAP ON GLASS STOP  
USE FOR  
PART # 450-206, 207



PART #: 450-235  
DOOR STOP BASE  
3/4" (19mm)

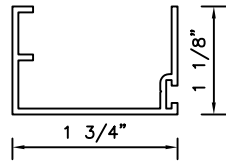


PART #: 450-230  
POCKET FILLER

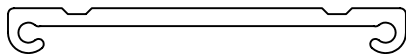


PART #: 450-236  
SNAP ON GLASS STOP  
USE FOR  
PART # 450-234, 235

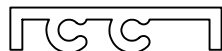
**SYSTEM COMPONENTS**



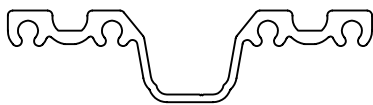
PART #: 450-237  
DOOR STOP  
USE FOR  
LCN/DORMA CLOSERS



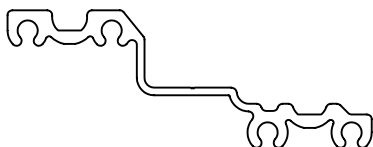
PART #: 450-902  
HEADER BRACKET  
TO CONNECT HEADER  
TO VERTICAL  
(USE WITH OFFSET PIVOT)



PART #: 450-904  
SIDELIGHT BRACKET  
TO CONNECT  
SIDELIGHT BASE  
TO VERTICAL



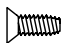


PART #: 450-901  
MULLION BRACKET  
TO CONNECT PART #:  
450-104, 450-105 & 450-228  
TO VERTICAL



PART #: 450-903  
MULLION BRACKET  
TO CONNECT PART #:  
450-204 & 450-202  
TO VERTICAL

**SYSTEM COMPONENTS**

DRAWING	DESCRIPTION	APPLICATION	QTY/ JOINT
	PART #: 9902-410 # 10 X 2" PH SCREW	TO FASTEN MULLION/SILL BRACKET TO VERTICAL	4
	PART #: 9902-410 # 10 X 2" PH SCREW	TO FASTEN HEADER/SIDELIGHT BRACKET TO VERTICAL	2
	PART #: 9902-600 # 10-24 X 5/8" FHM SCREW	TO FASTEN HORIZONTAL TO BRACKET	2

**SYSTEM FASTENERS**



PART #: 9903-101  
GLAZING SPLINE  
APPLY TO FRONT



PART #: 9903-102  
GLAZING SPLINE  
APPLY TO BACK



PART #: 9905-001  
WEATHER STRIPPING  
FOR DOOR STOP

**SYSTEM GLAZING SPLINE AND WEATHERING**