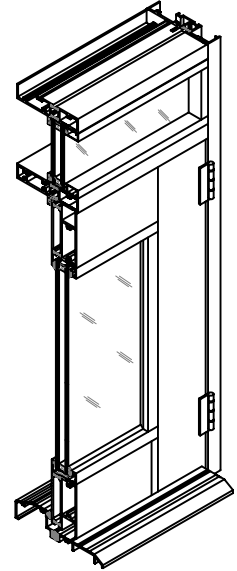


TECHNICAL DATA

SERIES 4700 THERMAL DOOR



- DESCRIPTION:
- ✧ HEAVY INSULATED COMMERCIAL DOOR AND FRAME
 - ✧ 2" DEEP BY 3-3/4" WIDE STILE AND RAIL
 - ✧ 4-7/8" DEEP BY 1" WIDE FRAME
 - ✧ EXTERIOR AND INTERIOR ARE SEPARATED BY TWO ROWS OF ISOBAR THERMAL BREAK
 - ✧ TWO ROWS OF WEATHER SEAL
 - ✧ DOOR SWING ON BUTT HINGE
 - ✧ TWO COLOUR OPTION FOR INTERIOR AND EXTERIOR

APPLICATIONS: RESIDENTIAL CONDOMINIUMS, HOTELS AND SIMILAR APPLICATIONS.

FINISH: SWING DOOR MATERIAL STOCKED IN MILL FINISH. ALL OTHER FINISHES ARE AVAILABLE UPON REQUEST.

ASSEMBLY: BUTT JOINT MECHANICALLY FASTENED CORNERS.

GLAZING: DOOR WILL ACCEPT 1" (25mm) SEALED UNIT GLASS.

OPTIONS: DOOR CAN BE SOLD SEPARATELY OR WITH ANY OTHER FRAME TYPE FOR COMMERCIAL APPLICATIONS.