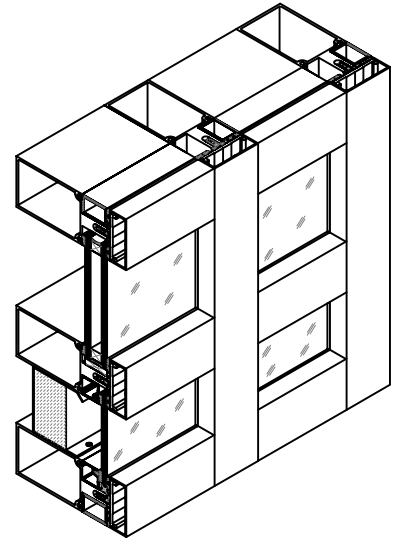


TECHNICAL DATA

SERIES 6100 CURTAIN WALL SYSTEM



DESCRIPTION: 2-1/2" (63.5mm) WIDE THERMALLY BROKEN LOW SPAN WALL SYSTEM, WITH MULLION BACK SECTION SIZES 3-5/8" (92.1mm) AND 5-1/4" (133.4mm) DEEP.

COMPATIBILITY: DESIGNED TO SUIT ALL DOORS AND DOOR HARDWARE.

FINISH: MOST PROFILES ARE STOCKED IN #17 CLEAR AND #40 BRONZE ANODIZED. OTHER ANODIZED AND PAINT FINISHES ARE AVAILABLE UPON REQUEST. DIFFERENT FINISHES EXTERIOR AND INTERIOR ARE AVAILABLE.

STOCK LENGTH: 24'-2" (7.37 METERS).

ASSEMBLY: DESIGNED FOR SHEAR BLOCK ASSEMBLY.

STRENGTH: REFER TO WIND LOAD CHARTS FOR MAXIMUM ALLOWABLE SPANS.

ANCHORING: REFER TO FABRICATION AND INSTALLATION MANUAL.

GLAZING: 6100 SERIES IS AN EXTERIOR GLAZED SYSTEM WHICH WILL ACCEPT 1/4" (6mm), 3/8" (10mm) OR 1/2" (12mm) SINGLE GLASS AND 1" (25mm) OR 1-3/4" (44.5mm) SEALED UNIT GLASS.